

Alpha-Tubulin Rabbit Polyclonal Antibody



CABC014

Product Information

Size:

100 uL

Observed MW:

55kDa

Calculated MW:

48kDa/49kDa

Applications:

WB IHC IF

Reactivity:

Human, Mouse, Rat

Antibody Information

Recommended dilutions:

WB 1:500 - 1:2000 IHC 1:25
- 1:50 IF 1:25 - 1:100

Source:

Rabbit

Isotype:

IgG

Purification:

Affinity purification

Protein Background

Microtubules of the eukaryotic cytoskeleton perform essential and diverse functions and are composed of a heterodimer of alpha and beta tubulin. The genes encoding these microtubule constituents are part of the tubulin superfamily, which is composed of six distinct families. Genes from the alpha, beta and gamma tubulin families are found in all eukaryotes. The alpha and beta tubulins represent the major components of microtubules, while gamma tubulin plays a critical role in the nucleation of microtubule assembly. There are multiple alpha and beta tubulin genes and they are highly conserved among and between species. This gene encodes an alpha tubulin that is a highly conserved homolog of a rat testis-specific alpha tubulin. Alternatively spliced transcript variants encoding different isoforms have been found for this gene.

Immunogen information

Gene ID:

7277

Uniprot

P68366

Synonyms:

TUBA4A; ALS22; H2-ALPHA; TUBA1

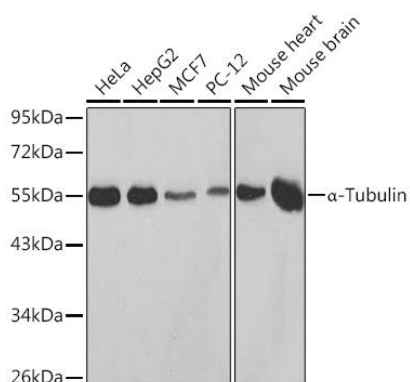
Immunogen:

Recombinant protein of human Alpha-Tubulin

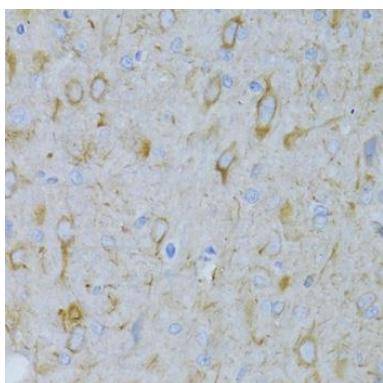
Storage:

Store at -20°C. Avoid freeze / thaw cycles. Buffer: PBS with 0.02% sodium azide, 50% glycerol, pH7.3.

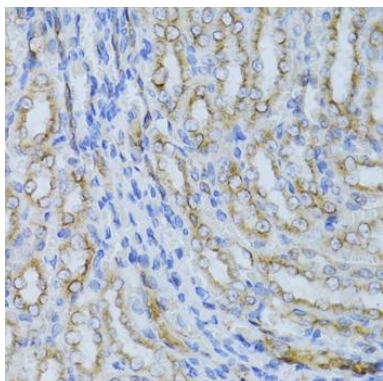
Product Images



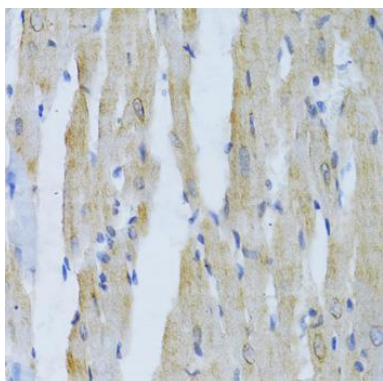
Western blot analysis of extracts of various cell lines, using alpha-Tubulin Rabbit pAb (CABC014) at 1:500 dilution. Secondary antibody: HRP Goat Anti-Rabbit IgG (H+L) (CABS014) at 1:10000 dilution. Lysates/proteins: 25ug per lane. Blocking buffer: 3% nonfat dry milk in TBST. Detection: ECL Basic Kit (CABM00020).



Immunohistochemistry of paraffin-embedded rat brain using alpha-Tubulin Antibody (CABC014) at dilution of 1:100 (40x lens).



Immunohistochemistry of paraffin-embedded rat kidney using alpha-Tubulin Antibody (CABC014) at dilution of 1:100 (40x lens).



Immunohistochemistry of paraffin-embedded rat heart using alpha-Tubulin Antibody (CABC014) at dilution of 1:100 (40x lens).