

Beta-Tubulin Mouse Monoclonal Antibody



CABC021

Product Information

Size:

100 uL

Observed MW:

50kDa

Calculated MW:

49kDa

Applications:

WB IHC IF IP

Reactivity:

Human, Mouse, Rat,
Hamster, Monkey, Goat,
Chlamydomonas Reinhardtii

Protein Background

This gene encodes a beta tubulin protein. This protein forms a dimer with alpha tubulin and acts as a structural component of microtubules. Mutations in this gene cause cortical dysplasia, complex, with other brain malformations 6. Alternative splicing results in multiple splice variants. There are multiple pseudogenes for this gene on chromosomes 1, 6, 7, 8, 9, and 13.

Immunogen information

Gene ID:

203068

Uniprot

P07437

Synonyms:

CDCBM6; CSCSC1; M40; OK/SW-cl.56; TUBB1; TUBB5; Beta Tubulin;
TUBB; Beta-Tubulin

Immunogen:

Recombinant protein of human Beta-Tubulin

Antibody Information

Recommended dilutions:

WB 1:5000 - 1:10000 IHC
1:50- 1:200 IF 1:50- 1:200
IP 1:50- 1:200

Source:

Mouse

Isotype:

IgG

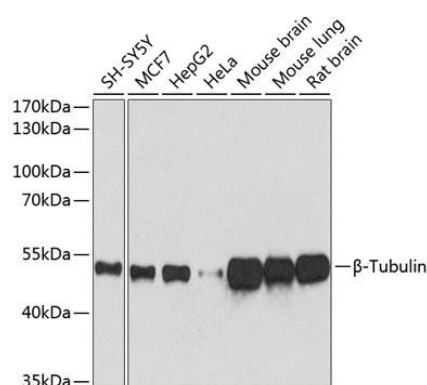
Purification:

Affinity purification

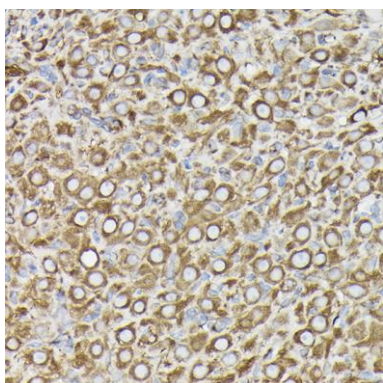
Storage:

Store at -20°C. Avoid freeze / thaw cycles. Buffer: PBS with 0.02%
sodium azide, 50% glycerol, pH7.3.

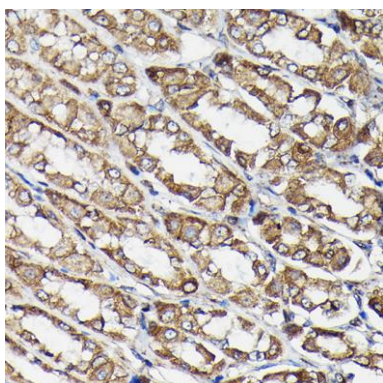
Product Images



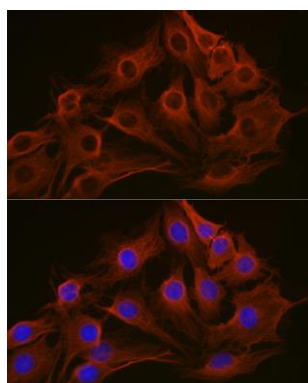
Western blot analysis of extracts of various cell lines, using beta-Tubulin antibody (CABC021) at 1:5000 dilution. Secondary antibody: HRP Goat Anti-Mouse IgG (H+L) (CABS003) at 1:10000 dilution. Lysates/proteins: 25ug per lane. Blocking buffer: 3% nonfat dry milk in TBST. Detection: ECL Basic Kit (CABM00020). Exposure time: 10s.



Immunohistochemistry of paraffin-embedded rat ovary using beta-Tubulin Mouse mAb (CABC021) at dilution of 1:100 (40x lens).



Immunohistochemistry of paraffin-embedded rat stomach using B-Tubulin Mouse mAb (CABC021) at dilution of 1:100 (40x lens).



Immunofluorescence analysis of C6 cells using beta-Tubulin Mouse mAb (CABC021) at dilution of 1:100 (40x lens). Blue: DAPI for nuclear staining.