

Tubulin alpha 1b Rabbit Polyclonal Antibody



CABC024

Product Information

Size:

100 uL

Observed MW:

52kDa

Calculated MW:

37kDa/50kDa

Applications:

WB IHC IF

Reactivity:

Human, Mouse, Rat

Antibody Information

Recommended dilutions:

WB 1:500 - 1:2000 IHC 1:50
- 1:200 IF 1:50 - 1:200

Source:

Rabbit

Isotype:

IgG

Purification:

Affinity purification

Protein Background

Tubulin is the major constituent of microtubules. It binds two moles of GTP, one at an exchangeable site on the beta chain and one at a non-exchangeable site on the alpha chain.

Immunogen information

Gene ID:

10376

Uniprot

P68363

Synonyms:

TUBA1B; K-ALPHA-1

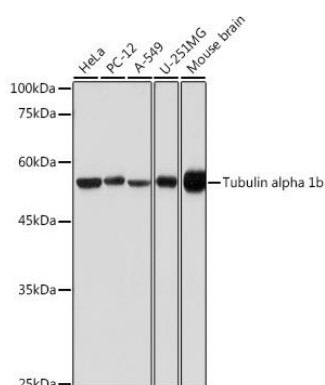
Immunogen:

Recombinant fusion protein containing a sequence corresponding to amino acids 1-451 of human Tubulin alpha 1b (NP_006073.2).

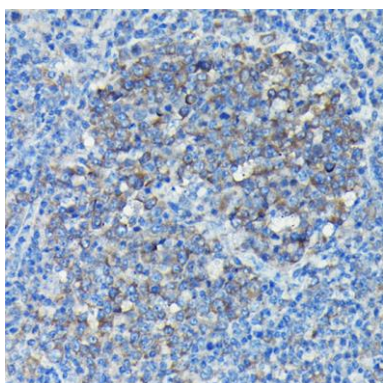
Storage:

Store at -20°C. Avoid freeze / thaw cycles. Buffer: PBS with 0.02% sodium azide, 50% glycerol, pH7.3.

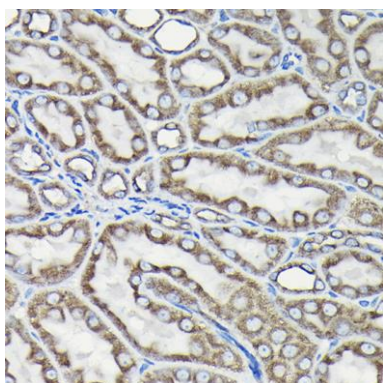
Product Images



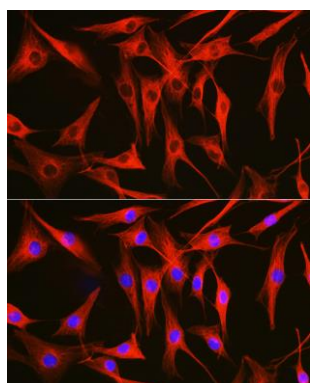
Western blot analysis of extracts of various cell lines, using Tubulin alpha 1b antibody (CABC024) at 1:500 dilution. Secondary antibody: HRP Goat Anti-Rabbit IgG (H+L) (CABS014) at 1:10000 dilution. Lysates/proteins: 25ug per lane. Blocking buffer: 3% nonfat dry milk in TBST. Detection: ECL Basic Kit (CABM00020). Exposure time: 1s.



Immunohistochemistry of paraffin-embedded Mouse spleen using Tubulin alpha 1b antibody (CABC024) at dilution of 1:50 (40x lens).



Immunohistochemistry of paraffin-embedded Rat kidney using Tubulin alpha 1b antibody (CABC024) at dilution of 1:50 (40x lens).



Immunofluorescence analysis of NIH/3T3 cells using Tubulin alpha 1b antibody (CABC024) at dilution of 1:100. Blue: DAPI for nuclear staining.