

Anti-Beta Actin Rabbit Antibody, (High Dilution)



CABC026

Product Information

Size:
50uL, 100uL

Observed MW:
42KDa

Calculated MW:
41kDa

Applications:
WB, IHC

Reactivity:
Human, Mouse, Rat, Chicken,
Zebrafish, Pig, Oryza sativa

Category:
Loading control Antibodies

Antibody Information

Recommended dilutions:
WB 1:50000 - 1:200000
IHC 1:200 - 1:2000

Source:
Rabbit

Isotype:
IgG

Purification:
Affinity purification

Protein Background

This gene encodes one of six different actin proteins. Actins are highly conserved proteins that are involved in cell motility, structure, and integrity. This actin is a major constituent of the contractile apparatus and one of the two no muscle cytoskeletal actins.

Note: Dilution method

Put 5ul CABC026 into 45 ul buffer (with 50% glycerol), diluted 1:10,000 for using. The diluted antibody can be stored at -20°C without aliquot.

Immunogen information

Gene ID:
60

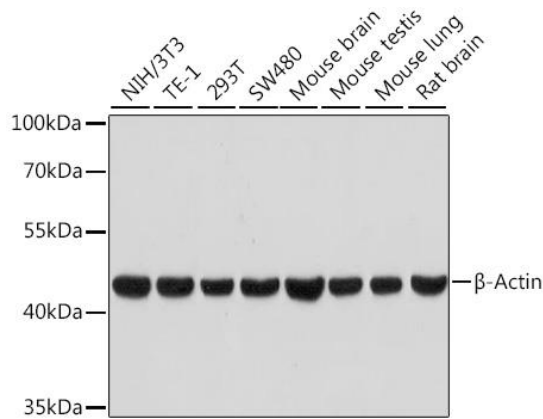
Uniprot
P60709

Synonyms:
ACTB; BRWS1; PS1TP5BP1; beta actin; actin

Immunogen:
Recombinant protein of human β -actin

Storage:
Store at -20°C. Avoid freeze / thaw cycles.
Buffer: PBS with 0.09% sodium azide,50% glycerol, pH7.3.

Product Images



Western blot analysis of extracts of various cell lines, using β -actin antibody (CABC026) at 1:100000 dilution.

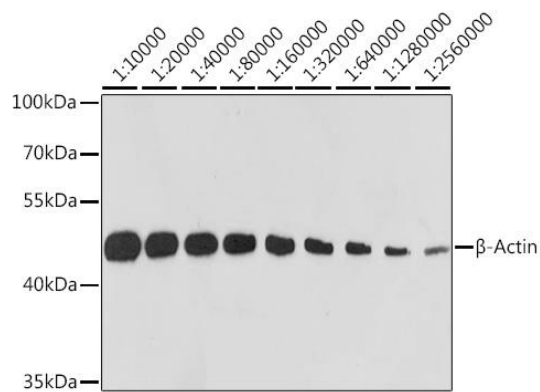
Secondary antibody: HRP Goat Anti-Rabbit IgG (H+L) (CABS014) at 1:10000 dilution.

Lysates/proteins: 25ug per lane.

Blocking buffer: 3% non-fat dry milk in TBST.

Detection: ECL Basic Kit (AbGn00020).

Exposure time: 30s.



Western blot analysis of extracts of HeLa cells, using β -actin antibody (CABC026) at 1:10000-1:2560000 dilution.

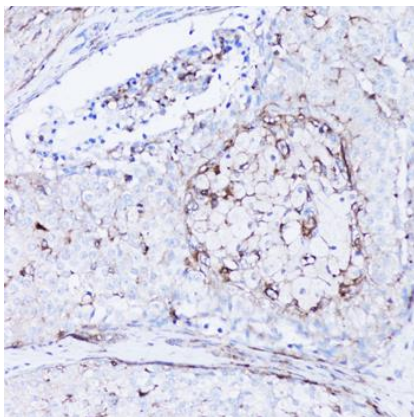
Secondary antibody: HRP Goat Anti-Rabbit IgG (H+L) (CABS014) at 1:10000 dilution.

Lysates/proteins: 25ug per lane.

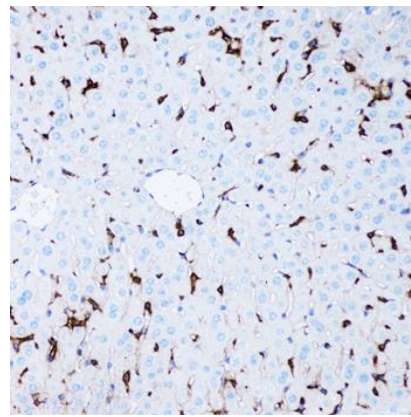
Blocking buffer: 3% non-fat dry milk in TBST.

Detection: ECL Basic Kit (AbGn00020).

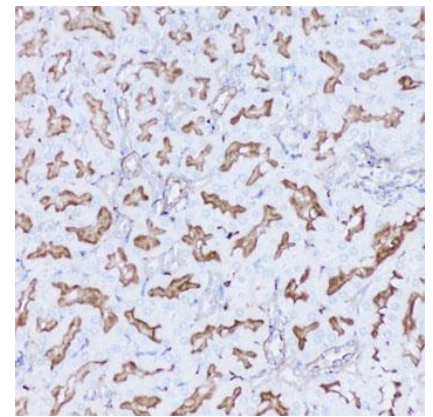
Exposure time: 10s.



Immunohistochemistry of paraffin-embedded human breast cancer using β -actin antibody (CABC026) at dilution of 1:100 (20x lens).



Immunohistochemistry of paraffin-embedded mouse liver using β -actin antibody (CABC026) at dilution of 1:100 (20x lens).



Immunohistochemistry of paraffin-embedded rat kidney using β -actin antibody (CABC026) at dilution of 1:100 (20x lens).