

GAPDH Mouse Monoclonal Antibody (High Dilution)

CABC033



Product Information

Size:

100 uL

Observed MW:

36kDa

Calculated MW:

31kDa/36kDa

Applications:

WB IHC IF

Reactivity:

Human, Mouse, Rat

Antibody Information

Recommended dilutions:

WB 1:50000 - 1:200000 IHC
1:50 - 1:200 IF 1:50 - 1:200

Source:

Mouse

Isotype:

IgG

Purification:

Affinity purification

Protein Background

This gene encodes a member of the glyceraldehyde-3-phosphate dehydrogenase protein family. The encoded protein has been identified as a moonlighting protein based on its ability to perform mechanistically distinct functions. The product of this gene catalyzes an important energy-yielding step in carbohydrate metabolism, the reversible oxidative phosphorylation of glyceraldehyde-3-phosphate in the presence of inorganic phosphate and nicotinamide adenine dinucleotide (NAD). The encoded protein has additionally been identified to have uracil DNA glycosylase activity in the nucleus. Also, this protein contains a peptide that has antimicrobial activity against *E. coli*, *P. aeruginosa*, and *C. albicans*. Studies of a similar protein in mouse have assigned a variety of additional functions including nitrosylation of nuclear proteins, the regulation of mRNA stability, and acting as a transferrin receptor on the cell surface of macrophage. Many pseudogenes similar to this locus are present in the human genome. Alternative splicing results in multiple transcript variants. Note : Dilution method Put 5ul AC033 into 45 ul buffer(with 50% glycerol), diluted 1:10, 000 for using. The diluted antibody can be stored at -20°C without aliquot.

Immunogen information

Gene ID:

2597

Uniprot

P04406

Synonyms:

G3PD; GAPD; HEL-S-162eP; GAPDH

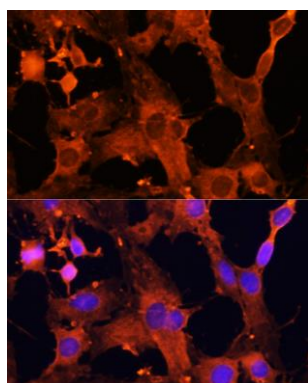
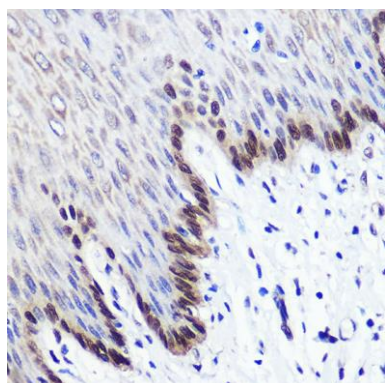
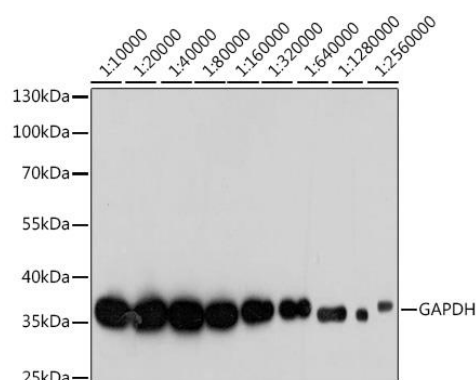
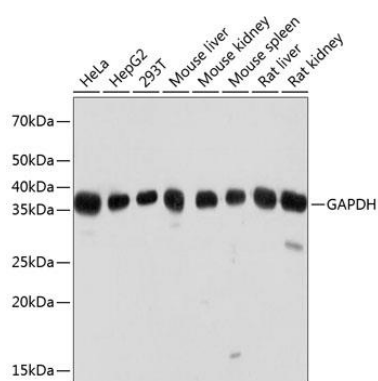
Immunogen:

Recombinant protein of human GAPDH

Storage:

Store at -20°C. Avoid freeze / thaw cycles. Buffer: PBS with 0.02% sodium azide, 50% glycerol, pH7.3.

Product Images



Western blot analysis of extracts of various cell lines, using GAPDH Monoclonal Antibody (CABC033) at 1:20000 dilution. Secondary antibody: HRP Goat Anti-Mouse IgG (H+L) (CABS003) at 1:10000 dilution. Lysates/proteins: 25ug per lane. Blocking buffer: 3% nonfat dry milk in TBST. Detection: ECL Basic Kit (CABM00020). Exposure time: 1s.

Western blot analysis of extracts of HeLa cells, using GAPDH antibody (CABC033) at 1:10000-1:2560000 dilution. Secondary antibody: HRP Goat Anti-Mouse IgG (H+L) (CABS003) at 1:10000 dilution. Lysates/proteins: 25ug per lane. Blocking buffer: 3% nonfat dry milk in TBST. Detection: ECL Basic Kit (CABM00020). Exposure time: 1s.

Immunohistochemistry of paraffin-embedded Human esophageal using GAPDH Mouse mAb (CABC033) at dilution of 1:100 (40x lens).

Immunofluorescence analysis of C6 cells using GAPDH Mouse mAb (CABC033) at dilution of 1:100 (40x lens). Blue: DAPI for nuclear staining.