

ACTB Rabbit Monoclonal Antibody



CABC038

Product Information

Size:

100 uL

Observed MW:

45kDa

Calculated MW:

41kDa

Applications:

WB IHC

Reactivity:

Human, Mouse, Rat, Chicken,
Zebrafish, Pig, Oryza sativa

Antibody Information

Recommended dilutions:

WB 1:10000 - 1:100000 IHC
1:20 - 1:200

Source:

Rabbit

Isotype:

IgG

Purification:

Affinity purification

Protein Background

This gene encodes one of six different actin proteins. Actins are highly conserved proteins that are involved in cell motility, structure, and integrity. This actin is a major constituent of the contractile apparatus and one of the two nonmuscle cytoskeletal actins.

Put 5ul AC038 into 45 ul buffer(with 50% glycerol), diluted 1:10, 000 for using. The diluted antibody can be stored at -20°C without aliquot.

Immunogen information

Gene ID:

60

Uniprot

P60709

Synonyms:

ACTB; BRWS1; PS1TP5BP1; beta actin; actin

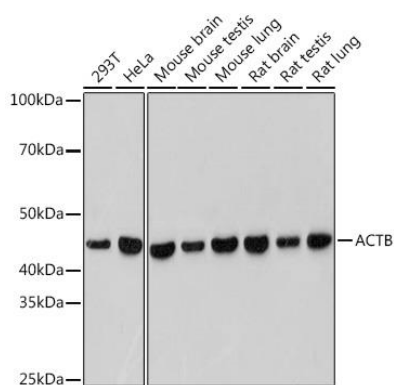
Immunogen:

Recombinant protein of human Beta-actin

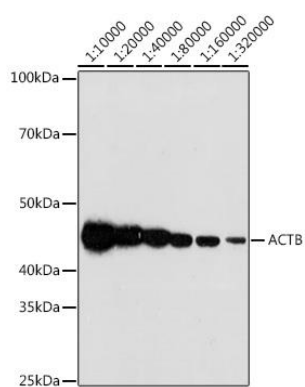
Storage:

Store at -20°C. Avoid freeze / thaw cycles. Buffer: PBS with 0.02% sodium azide, 50% glycerol, pH7.3.

Product Images



Western blot analysis of extracts of various cell lines, using ACTB antibody (CABC038) at 1:50000 dilution. Secondary antibody: HRP Goat Anti-Rabbit IgG (H+L) (CABS014) at 1:10000 dilution. Lysates/proteins: 25ug per lane. Blocking buffer: 3% nonfat dry milk in TBST. Detection: ECL Basic Kit (CABM00020). Exposure time: 60s.



Western blot analysis of extracts of HeLa cells, using ACTB antibody (CABC038) at 1:10000-1:320000 dilution. Secondary antibody: HRP Goat Anti-Rabbit IgG (H+L) (CABS014) at 1:10000 dilution. Lysates/proteins: 25ug per lane. Blocking buffer: 3% nonfat dry milk in TBST. Detection: ECL Basic Kit (CABM00020). Exposure time: 180s.