

# Mouse anti mCherry-Tag Monoclonal Antibody



CABE002

---

## Product Information

### Size:

100 uL

### Observed MW:

Refer to Figures

### Calculated MW:

## Protein Background

Protein tags are peptide sequences genetically grafted onto a recombinant protein. Often these tags are removable by chemical agents or by enzymatic means, such as proteolysis or intein splicing. Tags are attached to proteins for various purposes. Epitope tags are short peptide sequences which are chosen because high-affinity antibodies can be reliably produced in many different species. These are usually derived from viral genes, which explain their high immunoreactivity. Epitope tags include V5-tag, Myc-tag, HA-tag and NE-tag. These tags are particularly useful for western blotting, immunofluorescence and immunoprecipitation experiments, although they also find use in antibody purification.

## Immunogen information

### Applications:

WB IF

### Reactivity:

### Gene ID:

Uniprot

### Synonyms:

mCherry; mCherry tag; mCherry-tag

## Antibody Information

### Recommended dilutions:

WB 1:2000 - 1:5000 IF 1:50  
- 1:200

### Source:

Mouse

### Immunogen:

Recombinant protein of mCherry tag

### Storage:

Store at -20°C. Avoid freeze / thaw cycles. Buffer: PBS with 0.02% sodium azide, 50% glycerol, pH7.3.

### Isotype:

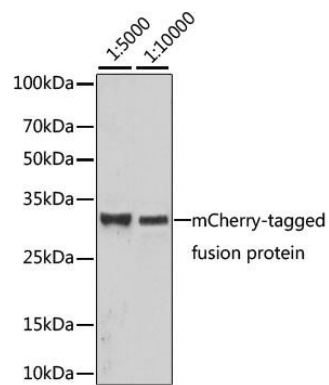
IgG

### Purification:

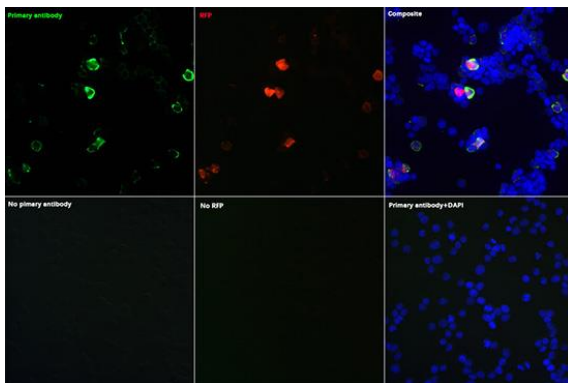
Affinity purification

## Product Images

---



Western blot analysis of over-expressed mCherry-tagged protein in 293T cells using Mouse anti mCherry-Tag mAb (CABE002) at different dilution.



Immunofluorescence analysis of 293T cells transfected with mCherry-Tag fusion protein and untreated 293T cells use Mouse anti mCherry-Tag mAb (CABE002) at dilution of 1:100 (40x lens). Blue: DAPI for nuclear staining.