

Mouse anti MBP-Tag Monoclonal Antibody



CABE016

Product Information

Size:

100 uL

Observed MW:

Refer to Figures

Calculated MW:

42.5 kDa

Applications:

WB

Reactivity:

Protein Background

Maltose-Binding Protein (MBP) is a part of the maltose/maltodextrin system of Escherichia coli, which is responsible for the uptake and efficient catabolism of maltodextrins. It is a complex regulatory and transport system involving many proteins and protein complexes. MBP has an approximate molecular mass of 42.5 kilodaltons.

Immunogen information

Gene ID:

Uniprot

Synonyms:

MBP; MBP tag; MBP-tag

Antibody Information

Recommended dilutions:

WB 1:500 - 1:5000

Source:

Mouse

Isotype:

IgG

Purification:

Affinity purification

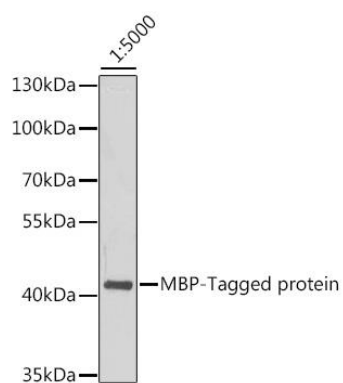
Immunogen:

Recombinant protein of MBP-Tag

Storage:

Store at -20°C. Avoid freeze / thaw cycles. Buffer: PBS with 0.02% sodium azide, 50% glycerol, pH7.3.

Product Images



Western blot analysis of recombinant MBP protein using Mouse anti MBP-Tag mAb (CABE016) at dilution of 1:5000.