

Mouse anti RFP-Tag Monoclonal Antibody



CABE020

Product Information

Size:

100 uL

Observed MW:

Refer to Figures

Calculated MW:

27kDa

Applications:

WB IHC IP

Reactivity:

Antibody Information

Recommended dilutions:

WB 1:2000 - 1:5000 IHC
1:50 - 1:200 IP 1:50 - 1:200

Source:

Mouse

Isotype:

IgG

Purification:

Affinity purification

Protein Background

Protein tags are peptide sequences genetically grafted onto a recombinant protein. Often these tags are removable by chemical agents or by enzymatic means, such as proteolysis or intein splicing. Tags are attached to proteins for various purposes.

Epitope tags are short peptide sequences which are chosen because high-affinity antibodies can be reliably produced in many different species. These are usually derived from viral genes, which explain their high immunoreactivity. Epitope tags include V5-tag, Myc-tag, HA-tag and NE-tag. These tags are particularly useful for western blotting, immunofluorescence and immunoprecipitation experiments, although they also find use in antibody purification.

Immunogen information

Gene ID:

Uniprot

Synonyms:

RFP; RFP tag; RFP-tag

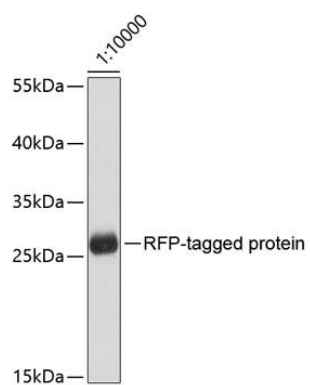
Immunogen:

Recombinant protein of RFP-Tag

Storage:

Store at -20°C. Avoid freeze / thaw cycles. Buffer: PBS with 0.02% sodium azide, 50% glycerol, pH7.3.

Product Images



Western blot analysis of recombinant RFP protein using RFP-tag antibody (CABE020) at dilution of 1:10000. Secondary antibody: HRP Goat Anti-Mouse IgG (H+L) (CABS003) at 1:10000 dilution. Lysates/proteins: 25ug per lane. Blocking buffer: 3% nonfat dry milk in TBST.