

Phospho-ABL1-Y245 Rabbit Polyclonal Antibody



CABP0001

Product Information

Size:

20uL, 50uL, 100uL, 200uL

Observed MW:

124kDa

Calculated MW:

122kDa/124kDa

Applications:

WB IHC

Reactivity:

Human, Mouse, Rat

Antibody Information

Recommended dilutions:

WB 1:500 - 1:2000 IHC 1:50
- 1:200

Source:

Rabbit

Isotype:

IgG

Purification:

Affinity purification

Protein Background

This gene is a protooncogene that encodes a protein tyrosine kinase involved in a variety of cellular processes, including cell division, adhesion, differentiation, and response to stress. The activity of the protein is negatively regulated by its SH3 domain, whereby deletion of the region encoding this domain results in an oncogene. The ubiquitously expressed protein has DNA-binding activity that is regulated by CDC2-mediated phosphorylation, suggesting a cell cycle function. This gene has been found fused to a variety of translocation partner genes in various leukemias, most notably the t(9;22) translocation that results in a fusion with the 5' end of the breakpoint cluster region gene (BCR; MIM:151410). Alternative splicing of this gene results in two transcript variants, which contain alternative first exons that are spliced to the remaining common exons.

Immunogen information

Gene ID:

25

Uniprot

P00519

Synonyms:

ABL; JTK7; p150; c-ABL; v-abl; CHDSKM; c-ABL1; ABL1; c-Abl;
bcr/abl

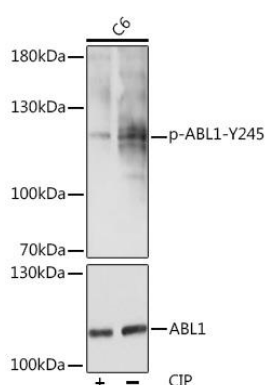
Immunogen:

A phospho specific peptide corresponding to residues surrounding
Y245 of human ABL1

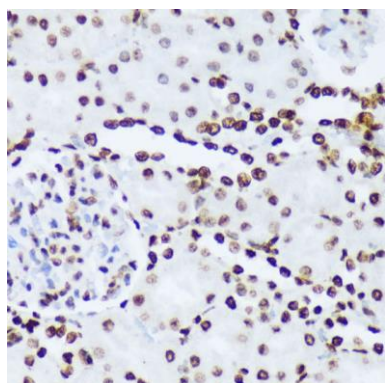
Storage:

Store at -20°C. Avoid freeze / thaw cycles. Buffer: PBS with 0.02%
sodium azide, 50% glycerol, pH7.3.

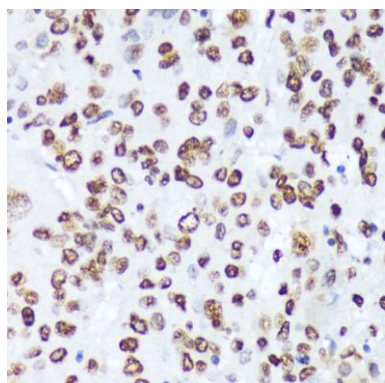
Product Images



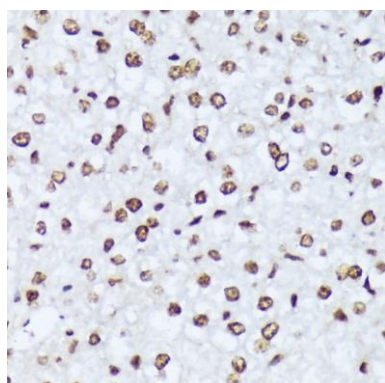
Western blot analysis of extracts of C6 cells, using Phospho-ABL1-Y245 pAb (CABP0001) at 1:1000 dilution or ABL1 antibody (CAB0282). C6 cells were treated by CIP (20uL/400ul) at 37°C for 1 hour. Secondary antibody: HRP Goat Anti-Rabbit IgG (H+L) (CABS014) at 1:10000 dilution. Lysates/proteins: 25ug per lane. Blocking buffer: 3% BSA. Detection: ECL Basic Kit (CABM00020). Exposure time: 3S.



Immunohistochemistry of paraffin-embedded rat kidney using Phospho-ABL1-Y245 antibody (CABP0001) at dilution of 1:100 (40x lens).



Immunohistochemistry of paraffin-embedded human liver cancer using Phospho-ABL1-Y245 antibody (CABP0001) at dilution of 1:100 (40x lens).



Immunohistochemistry of paraffin-embedded mouse liver using Phospho-ABL1-Y245 antibody (CABP0001) at dilution of 1:100 (40x lens).