

Phospho-ATM-S1981 Rabbit Polyclonal Antibody



CABP0008

Product Information

Size:

20uL, 50uL, 100uL, 200uL

Observed MW:

350kDa

Calculated MW:

350kDa

Applications:

WB IF

Reactivity:

Human

Antibody Information

Recommended dilutions:

WB 1:500 - 1:2000 IF 1:50 - 1:200

Source:

Rabbit

Isotype:

IgG

Purification:

Affinity purification

Protein Background

The protein encoded by this gene belongs to the PI3/PI4-kinase family. This protein is an important cell cycle checkpoint kinase that phosphorylates; thus, it functions as a regulator of a wide variety of downstream proteins, including tumor suppressor proteins p53 and BRCA1, checkpoint kinase CHK2, checkpoint proteins RAD17 and RAD9, and DNA repair protein NBS1. This protein and the closely related kinase ATR are thought to be master controllers of cell cycle checkpoint signaling pathways that are required for cell response to DNA damage and for genome stability. Mutations in this gene are associated with ataxia telangiectasia, an autosomal recessive disorder.

Immunogen information

Gene ID:

472

Uniprot

Q13315

Synonyms:

AT1; ATA; ATC; ATD; ATDC; ATE; TEL1; TELO1; ATM

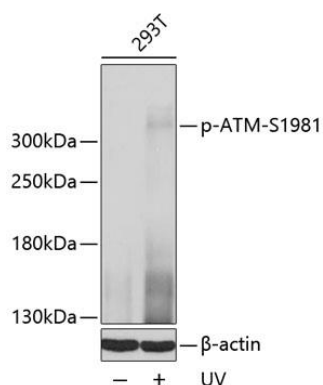
Immunogen:

A synthetic phosphorylated peptide around S1981 of human ATM (NP_000042.3).

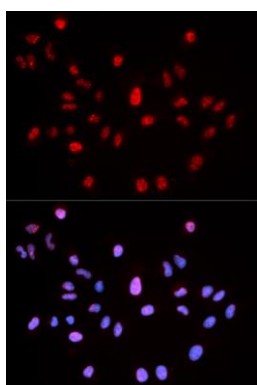
Storage:

Store at -20°C. Avoid freeze / thaw cycles. Buffer: PBS with 0.02% sodium azide, 50% glycerol, pH7.3.

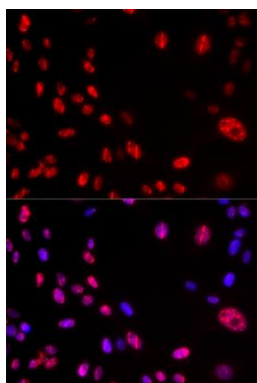
Product Images



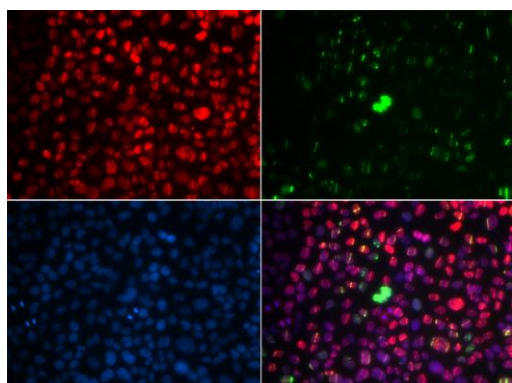
Western blot analysis of extracts of 293T cells, using Phospho-ATM-S1981 antibody (CABP0008) at 1:2000 dilution. 293T cells were treated by UV for 15-30 minutes. Secondary antibody: HRP Goat Anti-Rabbit IgG (H+L) (CABS014) at 1:10000 dilution. Lysates/proteins: 25ug per lane. Blocking buffer: 3% BSA. Detection: ECL Basic Kit (CABM00020). Exposure time: 10s.



Immunofluorescence analysis of MCF-7 cells using Phospho-ATM-S1981 antibody (CABP0008). Blue: DAPI for nuclear staining.



Immunofluorescence analysis of U2OS cells using Phospho-ATM-S1981 antibody (CABP0008). Blue: DAPI for nuclear staining.



Immunofluorescence analysis of U2OS cells using Phospho-ATM-S1981 antibody (CABP0008). Blue: DAPI for nuclear staining.