

# Phospho-BRAF-S445 Rabbit Polyclonal Antibody



CABP0012

## Product Information

### Size:

20uL, 50uL, 100uL, 200uL

### Observed MW:

100kDa

### Calculated MW:

84kDa

### Applications:

WB

### Reactivity:

Human, Rat

## Antibody Information

### Recommended dilutions:

WB 1:500 - 1:2000

### Source:

Rabbit

### Isotype:

IgG

### Purification:

Affinity purification

## Protein Background

This gene encodes a protein belonging to the raf/mil family of serine/threonine protein kinases. This protein plays a role in regulating the MAP kinase/ERKs signaling pathway, which affects cell division, differentiation, and secretion. Mutations in this gene are associated with cardiofaciocutaneous syndrome, a disease characterized by heart defects, mental retardation and a distinctive facial appearance. Mutations in this gene have also been associated with various cancers, including non-Hodgkin lymphoma, colorectal cancer, malignant melanoma, thyroid carcinoma, non-small cell lung carcinoma, and adenocarcinoma of lung. A pseudogene, which is located on chromosome X, has been identified for this gene.

## Immunogen information

### Gene ID:

673

### Uniprot

P15056

### Synonyms:

BRAF; B-RAF1; B-raf; BRAF1; NS7; RAFB1

### Immunogen:

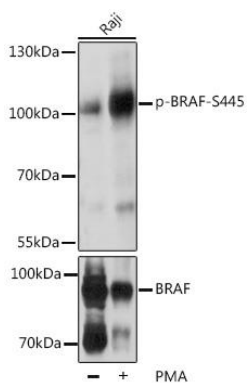
A synthetic phosphorylated peptide around S445 of human BRAF (NP\_004324.2).

### Storage:

Store at -20°C. Avoid freeze / thaw cycles. Buffer: PBS with 0.02% sodium azide, 50% glycerol, pH7.3.

## Product Images

---



Western blot analysis of extracts of Raji cells, using Phospho-BRAF-S445 pAb (CABP0012) at 1:2000 dilution or BRAF antibody (CAB0038).Raji cells were treated by PMA/TPA (200nM) for 30 minutes. Secondary antibody: HRP Goat Anti-Rabbit IgG (H+L) (CABS014) at 1:10000 dilution. Lysates/proteins: 25ug per lane. Blocking buffer: 3% BSA. Detection: ECL Basic Kit (CABM00020). Exposure time: 10s.