

Phospho-CREB1-S133 Rabbit Polyclonal Antibody



CABP0019

Product Information

Size:

20uL, 50uL, 100uL, 200uL

Observed MW:

36kDa

Calculated MW:

25kDa/35kDa/36kDa

Applications:

WB IHC IF IP

Reactivity:

Human, Rat

Protein Background

This gene encodes a transcription factor that is a member of the leucine zipper family of DNA binding proteins. This protein binds as a homodimer to the cAMP-responsive element, an octameric palindrome. The protein is phosphorylated by several protein kinases, and induces transcription of genes in response to hormonal stimulation of the cAMP pathway. Alternate splicing of this gene results in several transcript variants encoding different isoforms.

Immunogen information

Gene ID:

1385

Uniprot

P16220

Synonyms:

CREB1; CREB; CREB-1

Antibody Information

Recommended dilutions:

WB 1:200 - 1:2000 IHC 1:50
- 1:200 IF 1:50 - 1:100 IP
1:50 - 1:100

Source:

Rabbit

Isotype:

IgG

Purification:

Affinity purification

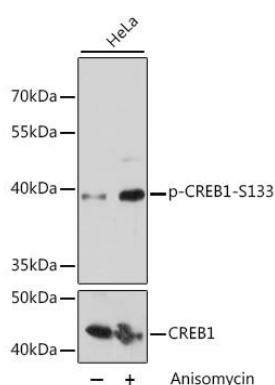
Immunogen:

A synthetic phosphorylated peptide around S133 of human CREB1 (NP_604391.1).

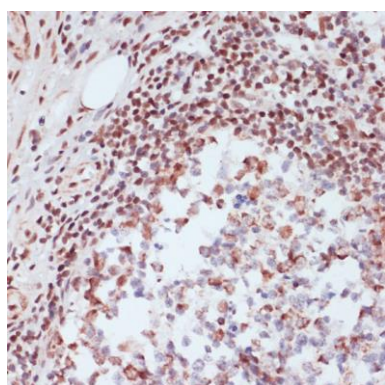
Storage:

Store at -20°C. Avoid freeze / thaw cycles. Buffer: PBS with 0.02% sodium azide, 50% glycerol, pH7.3.

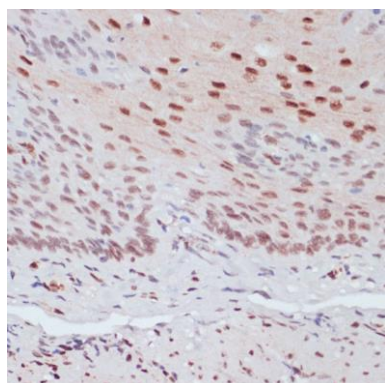
Product Images



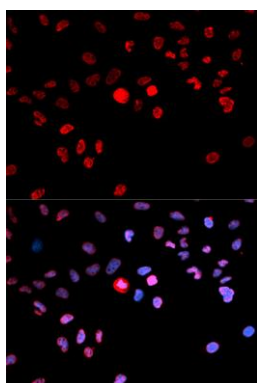
Western blot analysis of extracts of HeLa cells, using Phospho-CREB1-S133 pAb (CABP0019) at 1:2000 dilution or CREB1 antibody (CAB11064). HeLa cells were treated by Anisomycin (25 ug/mL) at 37°C for 30 minutes after serum-starvation overnight. Secondary antibody: HRP Goat Anti-Rabbit IgG (H+L) (CABS014) at 1:10000 dilution. Lysates/proteins: 25ug per lane. Blocking buffer: 3% BSA. Detection: ECL Basic Kit (CABM00020). Exposure time: 30s.



Immunohistochemistry of paraffin-embedded human appendix using Phospho-CREB1-S133 antibody (CABP0019) at dilution of 1:100 (40x lens).



Immunohistochemistry of paraffin-embedded human esophageal using Phospho-CREB1-S133 antibody (CABP0019) at dilution of 1:100 (40x lens).



Immunofluorescence analysis of MCF-7 cells using Phospho-CREB1-S133 antibody (CABP0019). Blue: DAPI for nuclear staining.