

Phospho-ATF2-T71 Rabbit Polyclonal Antibody



CABP0020

Product Information

Size:

20uL, 50uL, 100uL, 200uL

Observed MW:

70kDa

Calculated MW:

13- 15kDa/23-24kDa/35-54kDa

Applications:

WB IHC IF

Reactivity:

Human, Mouse, Rat

Antibody Information

Recommended dilutions:

WB 1:500 - 1:1000 IHC 1:50
- 1:100 IF 1:50 - 1:100

Source:

Rabbit

Isotype:

IgG

Purification:

Affinity purification

Protein Background

This gene encodes a transcription factor that is a member of the leucine zipper family of DNA binding proteins. The encoded protein has been identified as a moonlighting protein based on its ability to perform mechanistically distinct functions. This protein binds to the cAMP-responsive element (CRE), an octameric palindrome. It forms a homodimer or a heterodimer with c-Jun and stimulates CRE-dependent transcription. This protein is also a histone acetyltransferase (HAT) that specifically acetylates histones H2B and H4 in vitro; thus it may represent a class of sequence-specific factors that activate transcription by direct effects on chromatin components. The encoded protein may also be involved in cell's DNA damage response independent of its role in transcriptional regulation. Several alternatively spliced transcript variants have been found for this gene.

Immunogen information

Gene ID:

1386

Uniprot

P15336

Synonyms:

CRE-BP1; CREB-2; CREB2; HB16; TREB7; ATF2

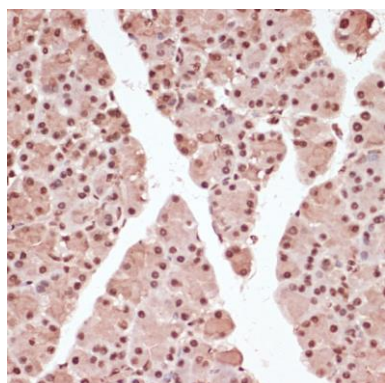
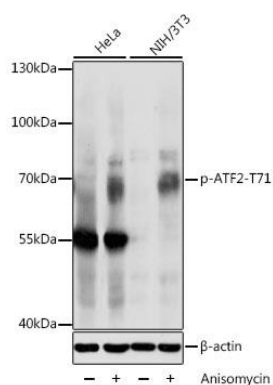
Immunogen:

A synthetic phosphorylated peptide around T71 of human ATF2 (NP_001871.2).

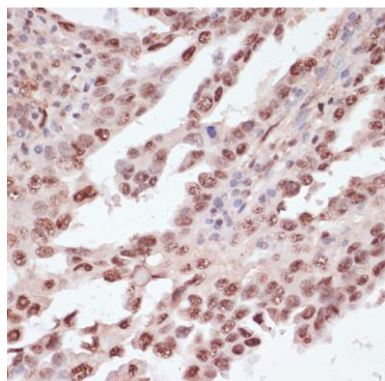
Storage:

Store at -20°C. Avoid freeze / thaw cycles. Buffer: PBS with 0.02% sodium azide, 50% glycerol, pH7.3.

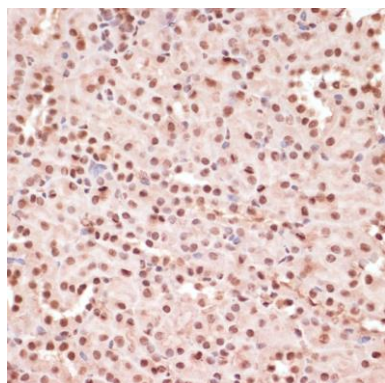
Product Images



Immunohistochemistry of paraffin-embedded rat pancreas using Phospho-ATF2-T71 antibody (CABP0020) at dilution of 1:100 (40x lens).



Immunohistochemistry of paraffin-embedded human lung cancer using Phospho-ATF2-T71 antibody (CABP0020) at dilution of 1:100 (40x lens).



Immunohistochemistry of paraffin-embedded mouse kidney using Phospho-ATF2-T71 antibody (CABP0020) at dilution of 1:100 (40x lens).