

# Phospho-EIF4EBP1-T70 Rabbit Polyclonal Antibody

## CABP0031



### Product Information

**Size:**

20uL, 50uL, 100uL, 200uL

**Observed MW:**

17kDa

**Calculated MW:**

12kDa

**Applications:**

WB

**Reactivity:**

Human, Mouse

### Protein Background

This gene encodes one member of a family of translation repressor proteins. The protein directly interacts with eukaryotic translation initiation factor 4E (eIF4E), which is a limiting component of the multisubunit complex that recruits 40S ribosomal subunits to the 5' end of mRNAs. Interaction of this protein with eIF4E inhibits complex assembly and represses translation. This protein is phosphorylated in response to various signals including UV irradiation and insulin signaling, resulting in its dissociation from eIF4E and activation of mRNA translation.

### Immunogen information

**Gene ID:**

1978

**Uniprot**

Q13541

**Synonyms:**

4E-BP1; 4EBP1; BP-1; PHAS-I; EIF4EBP1

### Antibody Information

**Recommended dilutions:**

WB 1:500 - 1:2000

**Source:**

Rabbit

**Isotype:**

IgG

**Purification:**

Affinity purification

**Immunogen:**

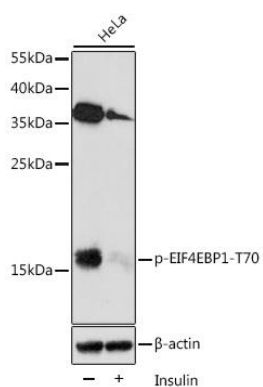
A synthetic phosphorylated peptide around T70 of human EIF4EBP1 (NP\_004086.1).

**Storage:**

Store at -20°C. Avoid freeze / thaw cycles. Buffer: PBS with 0.02% sodium azide, 50% glycerol, pH7.3.

## Product Images

---



Western blot analysis of extracts of HeLa cells, using Phospho-EIF4EBP1-T70 antibody (CABP0031) at 1:2000 dilution. HeLa cells were treated by Insulin (100 nM) at 37°C for 5 minutes after serum-starvation overnight. Secondary antibody: HRP Goat Anti-Rabbit IgG (H+L) (CABS014) at 1:10000 dilution. Lysates/proteins: 25ug per lane. Blocking buffer: 3% BSA. Detection: ECL Enhanced Kit (CABM00021). Exposure time: 3min.