

Phospho-ERBB4-Y1284 Rabbit Polyclonal Antibody

CABP0034



Product Information

Size:

20uL, 50uL, 100uL, 200uL

Observed MW:

200kDa

Calculated MW:

143kDa/145kDa/146kDa

Applications:

WB

Reactivity:

Human, Mouse, Rat

Antibody Information

Recommended dilutions:

WB 1:500 - 1:2000

Source:

Rabbit

Isotype:

IgG

Purification:

Affinity purification

Protein Background

This gene is a member of the Tyr protein kinase family and the epidermal growth factor receptor subfamily. It encodes a single-pass type I membrane protein with multiple cysteine rich domains, a transmembrane domain, a tyrosine kinase domain, a phosphotyrosine-3 kinase binding site and a PDZ domain binding motif. The protein binds to and is activated by neuregulins and other factors and induces a variety of cellular responses including mitogenesis and differentiation. Multiple proteolytic events allow for the release of a cytoplasmic fragment and an extracellular fragment. Mutations in this gene have been associated with cancer. Alternatively spliced variants which encode different protein isoforms have been described; however, not all variants have been fully characterized.

Immunogen information

Gene ID:

2066

Uniprot

Q15303

Synonyms:

ALS19; HER4; p180erbB4; ERBB4; HER4/ErbB4

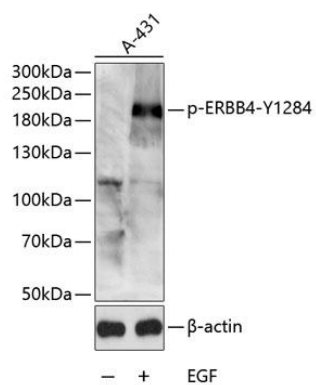
Immunogen:

A synthetic phosphorylated peptide around Y1284 of human ERBB4 (NP_005226.1).

Storage:

Store at -20°C. Avoid freeze / thaw cycles. Buffer: PBS with 0.02% sodium azide, 50% glycerol, pH7.3.

Product Images



Western blot analysis of extracts of A-431 cells, using Phospho-ERBB4-Y1284 antibody (CABP0034) at 1:1000 dilution. A431 cells were treated by EGF (100ng/mL) for 30 minutes after serum-starvation overnight. Secondary antibody: HRP Goat Anti-Rabbit IgG (H+L) (CABS014) at 1:10000 dilution. Lysates/proteins: 25ug per lane. Blocking buffer: 3% BSA.