

Phospho-HSPB1-S15 Rabbit Polyclonal Antibody



CABP0040

Product Information

Size:

20uL, 50uL, 100uL, 200uL

Observed MW:

28kDa

Calculated MW:

22kDa

Applications:

WB IHC IP

Reactivity:

Human

Antibody Information

Recommended dilutions:

WB 1:500 - 1:2000 IHC 1:50
- 1:200 IP 1:50 - 1:100

Source:

Rabbit

Isotype:

IgG

Purification:

Affinity purification

Protein Background

The protein encoded by this gene is induced by environmental stress and developmental changes. The encoded protein is involved in stress resistance and actin organization and translocates from the cytoplasm to the nucleus upon stress induction. Defects in this gene are a cause of Charcot-Marie-Tooth disease type 2F (CMT2F) and distal hereditary motor neuropathy (dHMN).

Immunogen information

Gene ID:

3315

Uniprot

P04792

Synonyms:

HSPB1; CMT2F; HEL-S-102; HMN2B; HS.76067; HSP27; HSP28;
Hsp25; SRP27

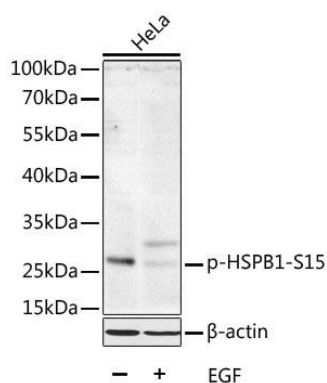
Immunogen:

A synthetic phosphorylated peptide around S15 of human HSPB1 (NP_001531.1).

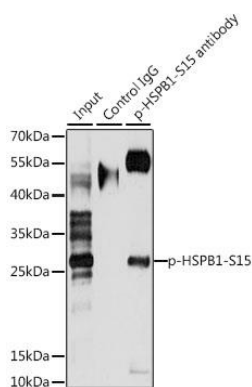
Storage:

Store at -20°C. Avoid freeze / thaw cycles. Buffer: PBS with 0.02% sodium azide, 50% glycerol, pH7.3.

Product Images



Western blot analysis of extracts of HeLa cells, using Phospho-HSPB1-S15 antibody (CABP0040) at 1:1000 dilution. HeLa cells were treated by EGF (100ng/mL) for 30 minutes after serum-starvation overnight. Secondary antibody: HRP Goat Anti-Rabbit IgG (H+L) (CABS014) at 1:10000 dilution. Lysates/proteins: 25ug per lane. Blocking buffer: 3% BSA. Detection: ECL Basic Kit (CABM00020). Exposure time: 5min.



Immunoprecipitation analysis of 200ug extracts of HeLa cells, using 3 ug Phospho-HSPB1-S15 pAb (CABP0040). Western blot was performed from the immunoprecipitate using Phospho-HSPB1-S15 pAb (CABP0040) at a dilution of 1:1000. HeLa cells were treated by EGF (100 ng/mL) at 37°C for 30 minutes after serum-starvation overnight.