

Phospho-INSR-Y1150/IGF1R-Y1135 Rabbit Polyclonal Antibody

CABP0044



Product Information

Size:

20uL, 50uL, 100uL, 200uL

Observed MW:

80kDa

Calculated MW:

154kDa/155kDa/156kDa

Applications:

WB

Reactivity:

Human, Mouse, Rat

Antibody Information

Recommended dilutions:

WB 1:500 - 1:2000

Source:

Rabbit

Isotype:

IgG

Purification:

Affinity purification

Protein Background

This receptor binds insulin-like growth factor with a high affinity. It has tyrosine kinase activity. The insulin-like growth factor I receptor plays a critical role in transformation events. Cleavage of the precursor generates alpha and beta subunits. It is highly overexpressed in most malignant tissues where it functions as an anti-apoptotic agent by enhancing cell survival. Alternatively spliced transcript variants encoding distinct isoforms have been found for this gene. [provided by RefSeq, May 2014]

Immunogen information

Gene ID:

3480/3643

Uniprot

P08069/P06213

Synonyms:

IGF1R/INSR

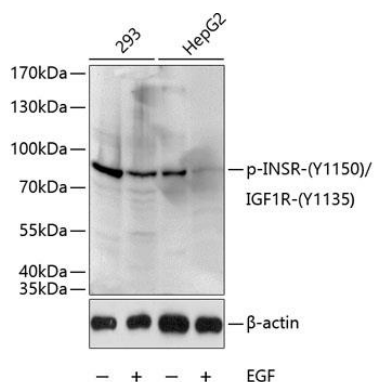
Immunogen:

A phospho specific peptide corresponding to residues surrounding Y1150 of human INSR and Y1135 of human IGF1R

Storage:

Store at -20°C. Avoid freeze / thaw cycles. Buffer: PBS with 0.02% sodium azide, 50% glycerol, pH7.3.

Product Images



Western blot analysis of extracts of 293 and HepG2 cells, using Phospho-INSR-Y1150/IGF1R-Y1135 antibody (CABP0044) at 1:1000 dilution. 293 cells were treated by EGF (25ug/mL) for 30 minutes after serum-starvation overnight. HepG2 cells were treated by EGF (100ng/mL) for 30 minutes after serum-starvation overnight. Secondary antibody: HRP Goat Anti-Rabbit IgG (H+L) (CABS014) at 1:10000 dilution. Lysates/proteins: 25ug per lane. Blocking buffer: 3% BSA.