

# Phospho-c-Jun-S63 Rabbit Polyclonal Antibody



CABP0048

## Product Information

### Size:

20uL, 50uL, 100uL, 200uL

### Observed MW:

48kDa

### Calculated MW:

35kDa

### Applications:

WB IF

### Reactivity:

Human, Rat

## Protein Background

This gene is the putative transforming gene of avian sarcoma virus 17. It encodes a protein which is highly similar to the viral protein, and which interacts directly with specific target DNA sequences to regulate gene expression. This gene is intronless and is mapped to 1p32-p31, a chromosomal region involved in both translocations and deletions in human malignancies.

## Immunogen information

### Gene ID:

3725

### Uniprot

P05412

### Synonyms:

AP-1; AP1; c-Jun; JUN; c

## Antibody Information

### Recommended dilutions:

WB 1:500 - 1:2000 IF 1:50 - 1:200

### Source:

Rabbit

### Isotype:

IgG

### Purification:

Affinity purification

### Immunogen:

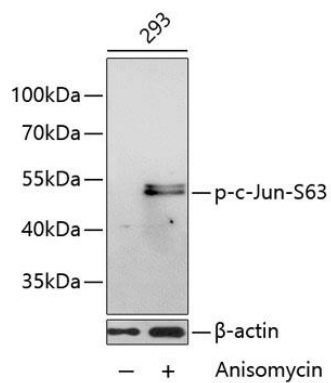
A synthetic phosphorylated peptide around S63 of human c-Jun (NP\_002219.1).

### Storage:

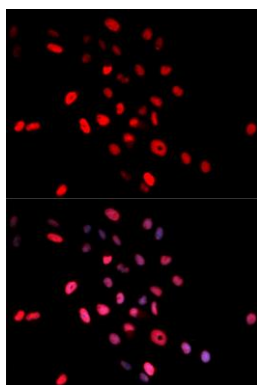
Store at -20°C. Avoid freeze / thaw cycles. Buffer: PBS with 0.02% sodium azide, 50% glycerol, pH7.3.

## Product Images

---



Western blot analysis of extracts of 293 cells, using Phospho-c-Jun-S63 antibody (CABP0048) at 1:1000 dilution. 293 cells were treated by Anisomycin (25ug/mL) for 30 minutes after serum-starvation overnight. Secondary antibody: HRP Goat Anti-Rabbit IgG (H+L) (CABS014) at 1:10000 dilution. Lysates/proteins: 25ug per lane. Blocking buffer: 3% BSA.



Immunofluorescence analysis of MCF-7 cells using Phospho-c-Jun-S63 antibody (CABP0048). Blue: DAPI for nuclear staining.