

Phospho-Jun-S243 Rabbit Polyclonal Antibody



CABP0050

Product Information

Size:

20uL, 50uL, 100uL, 200uL

Observed MW:

Refer to figures

Calculated MW:

35kDa

Applications:

WB IF

Reactivity:

Human, Mouse, Rat

Protein Background

This gene is the putative transforming gene of avian sarcoma virus 17. It encodes a protein which is highly similar to the viral protein, and which interacts directly with specific target DNA sequences to regulate gene expression. This gene is intronless and is mapped to 1p32-p31, a chromosomal region involved in both translocations and deletions in human malignancies.

Immunogen information

Gene ID:

3725

Uniprot

P05412

Synonyms:

AP-1; AP1; c-Jun; JUN; c

Antibody Information

Recommended dilutions:

WB 1:500 - 1:2000 IF 1:50 - 1:200

Source:

Rabbit

Isotype:

IgG

Purification:

Affinity purification

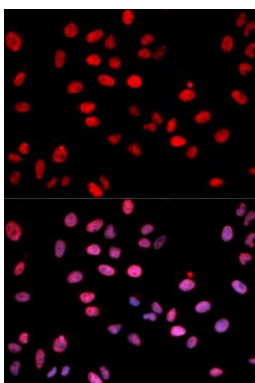
Immunogen:

A synthetic phosphorylated peptide around S243 of human Jun (NP_002219.1).

Storage:

Store at -20°C. Avoid freeze / thaw cycles. Buffer: PBS with 0.02% sodium azide, 50% glycerol, pH7.3.

Product Images



Immunofluorescence analysis of U2OS cells using Phospho-Jun-S243 antibody (CABP0050). Blue: DAPI for nuclear staining.