

# Phospho-STAT1-Y701 Rabbit Monoclonal Antibody

## CABP0054



### Product Information

**Size:**

20uL, 50uL, 100uL

**Observed MW:**

91kDa

**Calculated MW:**

84, 91kDa

**Applications:**

WB

**Reactivity:**

Human, Mouse, Rat

### Antibody Information

**Recommended dilutions:**

WB 1:500 - 1:2000

**Source:**

Rabbit

**Isotype:**

IgG

**Purification:**

Affinity purification

### Protein Background

The protein encoded by this gene is a member of the STAT protein family. In response to cytokines and growth factors, STAT family members are phosphorylated by the receptor associated kinases, and then form homo- or heterodimers that translocate to the cell nucleus where they act as transcription activators. This protein can be activated by various ligands including interferon-alpha, interferon-gamma, EGF, PDGF and IL6. This protein mediates the expression of a variety of genes, which is thought to be important for cell viability in response to different cell stimuli and pathogens. Two alternatively spliced transcript variants encoding distinct isoforms have been described. [provided by RefSeq, Jul 2008]

### Immunogen information

**Gene ID:**

6772

**Uniprot**

P42224

**Synonyms:**

CANDF7; IMD31A; IMD31B; IMD31C; ISGF-3; STAT91; STAT1 alpha; STAT1

**Immunogen:**

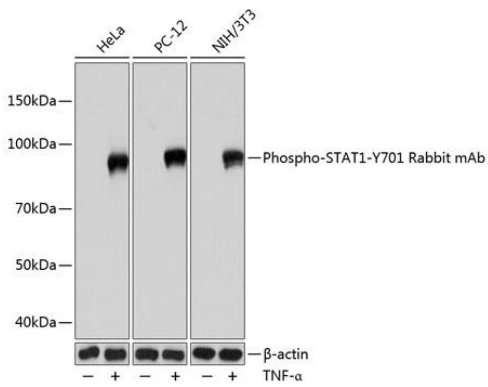
A synthesized peptide derived from human STAT1.

**Storage:**

Store at -20°C. Avoid freeze / thaw cycles. Buffer: PBS with 0.02% sodium azide, 0.05% BSA, 50% glycerol, pH7.3.

## Product Images

---



Western blot - Phospho-STAT1-Y701 Rabbit mAb (CABP0054)