

# Phospho-MAP2K1-S217 Rabbit Polyclonal Antibody

## CABP0062



### Product Information

**Size:**

20uL, 50uL, 100uL, 200uL

**Observed MW:**

43kDa

**Calculated MW:**

40kDa/43kDa

**Applications:**

WB

**Reactivity:**

Human, Mouse, Rat

### Antibody Information

**Recommended dilutions:**

WB 1:500 - 1:2000

**Source:**

Rabbit

**Isotype:**

IgG

**Purification:**

Affinity purification

### Protein Background

The protein encoded by this gene is a member of the dual specificity protein kinase family, which acts as a mitogen-activated protein (MAP) kinase kinase. MAP kinases, also known as extracellular signal-regulated kinases (ERKs), act as an integration point for multiple biochemical signals. This protein kinase lies upstream of MAP kinases and stimulates the enzymatic activity of MAP kinases upon wide variety of extra- and intracellular signals. As an essential component of MAP kinase signal transduction pathway, this kinase is involved in many cellular processes such as proliferation, differentiation, transcription regulation and development.

### Immunogen information

**Gene ID:**

5604

**Uniprot**

Q02750

**Synonyms:**

CFC3; MAPKK1; MEK1; MKK1; PRKMK1; MAP2K1

**Immunogen:**

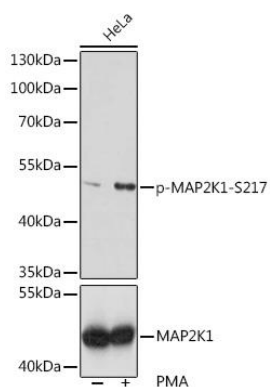
A synthetic phosphorylated peptide around S217 of human MAP2K1 (NP\_002746.1).

**Storage:**

Store at -20°C. Avoid freeze / thaw cycles. Buffer: PBS with 0.02% sodium azide, 50% glycerol, pH7.3.

## Product Images

---



Western blot analysis of extracts of HeLa cells, using Phospho-MAP2K1-S217 pAb (CABP0062) at 1:1000 dilution or MAP2K1 antibody (CAB12687). HeLa cells were treated by PMA/TPA (200 nM) at 37°C for 15 minutes after serum-starvation overnight. Secondary antibody: HRP Goat Anti-Rabbit IgG (H+L) (CABS014) at 1:10000 dilution. Lysates/proteins: 25ug per lane. Blocking buffer: 3% nonfat dry milk in TBST. Detection: ECL Basic Kit (CABM00020). Exposure time: 60s.