

# Phospho-MAP2K1-T286 Rabbit Polyclonal Antibody

## CABP0065



### Product Information

**Size:**

20uL, 50uL, 100uL, 200uL

**Observed MW:**

43kDa

**Calculated MW:**

40kDa/43kDa

**Applications:**

WB

**Reactivity:**

Human, Mouse, Rat

### Antibody Information

**Recommended dilutions:**

WB 1:500 - 1:2000

**Source:**

Rabbit

**Isotype:**

IgG

**Purification:**

Affinity purification

### Protein Background

The protein encoded by this gene is a member of the dual specificity protein kinase family, which acts as a mitogen-activated protein (MAP) kinase kinase. MAP kinases, also known as extracellular signal-regulated kinases (ERKs), act as an integration point for multiple biochemical signals. This protein kinase lies upstream of MAP kinases and stimulates the enzymatic activity of MAP kinases upon wide variety of extra- and intracellular signals. As an essential component of MAP kinase signal transduction pathway, this kinase is involved in many cellular processes such as proliferation, differentiation, transcription regulation and development.

### Immunogen information

**Gene ID:**

5604

**Uniprot**

Q02750

**Synonyms:**

CFC3; MAPKK1; MEK1; MKK1; PRKMK1; MAP2K1

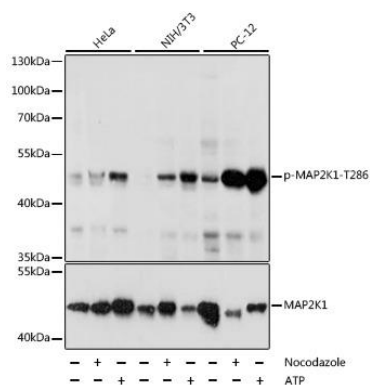
**Immunogen:**

A synthetic phosphorylated peptide around T286 of human MAP2K1 (NP\_002746.1).

**Storage:**

Store at -20°C. Avoid freeze / thaw cycles. Buffer: PBS with 0.02% sodium azide, 50% glycerol, pH7.3.

## Product Images



Western blot analysis of extracts of various cell lines, using Phospho-MAP2K1-T286 antibody (CABP0065) at 1:2000 dilution or MAP2K1 antibody (CAB12687). HeLa cells were treated by nocodazole (50 ng/mL) at 37°C for 20 hours or treated by ATP(5 mM) at 30°C for 1 hour. NIH/3T3 cells were treated by Nocodazole (50 ng/mL) at 37°C for 20 hours or treated by ATP(5 mM) at 30°C for 1 hour. PC-12 cells were treated by Nocodazole (1 ug/mL) at 37°C for 16 hours or treated by ATP(5 mM) at 30°C for 1 hour. Secondary antibody: HRP Goat Anti-Rabbit IgG (H+L) (CABS014) at 1:10000 dilution. Lysates/proteins: 25ug per lane. Blocking buffer: 3% BSA. Detection: ECL Basic Kit (CABM00020). Exposure time: 30s.