

Phospho-MDM2-S166 Rabbit Polyclonal Antibody

CABP0073



Product Information

Size:

20uL, 50uL, 100uL, 200uL

Observed MW:

95kDa

Calculated MW:

11-14kDa/24-55kDa

Applications:

WB IF

Reactivity:

Human, Mouse, Rat

Protein Background

This gene encodes a nuclear-localized E3 ubiquitin ligase. The encoded protein can promote tumor formation by targeting tumor suppressor proteins, such as p53, for proteasomal degradation. This gene is itself transcriptionally-regulated by p53. Overexpression or amplification of this locus is detected in a variety of different cancers. There is a pseudogene for this gene on chromosome 2. Alternative splicing results in a multitude of transcript variants, many of which may be expressed only in tumor cells.

Immunogen information

Gene ID:

4193

Uniprot

Q00987

Synonyms:

MDM2; ACTFS; HDMX; hdm2

Antibody Information

Recommended dilutions:

WB 1:500 - 1:1000 IF 1:50 - 1:100

Source:

Rabbit

Isotype:

IgG

Purification:

Affinity purification

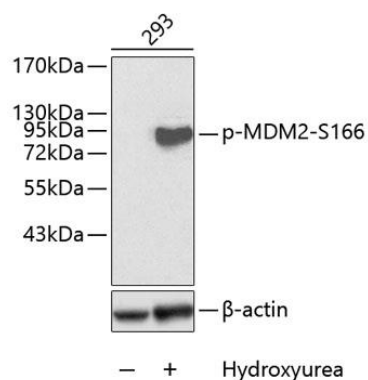
Immunogen:

A synthetic phosphorylated peptide around S166 of human MDM2 (NP_002383.2).

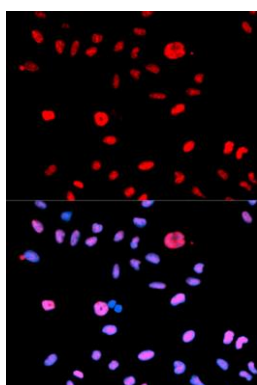
Storage:

Store at -20°C. Avoid freeze / thaw cycles. Buffer: PBS with 0.02% sodium azide, 50% glycerol, pH7.3.

Product Images



Western blot analysis of extracts of 293 cells, using Phospho-MDM2-S166 antibody (CABP0073). 293 cells were treated by Hydroxyurea (4mM) for 20 hours. Secondary antibody: HRP Goat Anti-Rabbit IgG (H+L) (CABS014) at 1:10000 dilution. Lysates/proteins: 25ug per lane. Blocking buffer: 3% BSA.



Immunofluorescence analysis of U2OS cells using Phospho-MDM2-S166 antibody (CABP0073). Blue: DAPI for nuclear staining.