

# Phospho-MDM2-S260 Rabbit Polyclonal Antibody

CABP0074



## Product Information

### Size:

20uL, 50uL, 100uL, 200uL

### Observed MW:

95kDa

### Calculated MW:

11-14kDa/24-55kDa

### Applications:

WB

### Reactivity:

Human

## Protein Background

This gene encodes a nuclear-localized E3 ubiquitin ligase. The encoded protein can promote tumor formation by targeting tumor suppressor proteins, such as p53, for proteasomal degradation. This gene is itself transcriptionally-regulated by p53. Overexpression or amplification of this locus is detected in a variety of different cancers. There is a pseudogene for this gene on chromosome 2. Alternative splicing results in a multitude of transcript variants, many of which may be expressed only in tumor cells.

## Immunogen information

### Gene ID:

4193

### Uniprot

Q00987

### Synonyms:

MDM2; ACTFS; HDMX; hdm2

## Antibody Information

### Recommended dilutions:

WB 1:500 - 1:2000

### Source:

Rabbit

### Isotype:

IgG

### Purification:

Affinity purification

### Immunogen:

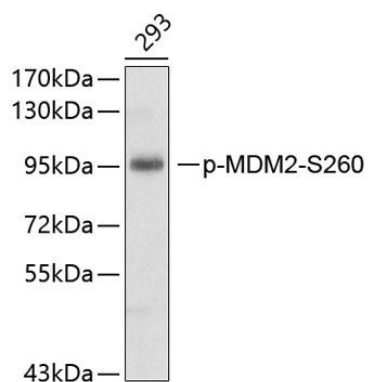
A phospho specific peptide corresponding to residues surrounding S450 of human MDM2

### Storage:

Store at -20°C. Avoid freeze / thaw cycles. Buffer: PBS with 0.02% sodium azide, 50% glycerol, pH7.3.

## Product Images

---



Western blot analysis of extracts of 293 cell line, using phospho-MDM2-S260 antibody (CABP0074). Secondary antibody: HRP Goat Anti-Rabbit IgG (H+L) (CABS014) at 1:10000 dilution. Lysates/proteins: 25ug per lane. Blocking buffer: 3% BSA.