

# Phospho-MEF2C-S396 Rabbit Polyclonal Antibody

## CABP0075



### Product Information

**Size:**

20uL, 50uL, 100uL, 200uL

**Observed MW:**

60kDa

**Calculated MW:**

44kDa/47kDa/50kDa/51kDa/  
52kDa

**Applications:**

WB IF

**Reactivity:**

Human

### Antibody Information

**Recommended dilutions:**

WB 1:500 - 1:2000 IF 1:50 -  
1:200

**Source:**

Rabbit

**Isotype:**

IgG

**Purification:**

Affinity purification

### Protein Background

This locus encodes a member of the MADS box transcription enhancer factor 2 (MEF2) family of proteins, which play a role in myogenesis. The encoded protein, MEF2 polypeptide C, has both trans-activating and DNA binding activities. This protein may play a role in maintaining the differentiated state of muscle cells. Mutations and deletions at this locus have been associated with severe mental retardation, stereotypic movements, epilepsy, and cerebral malformation. Alternatively spliced transcript variants have been described.

### Immunogen information

**Gene ID:**

4208

**Uniprot**

Q06413

**Synonyms:**

MEF2C; C5DELq14.3; DEL5q14.3

**Immunogen:**

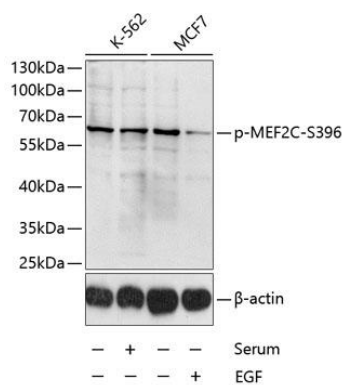
A synthetic phosphorylated peptide around S396 of human MEF2C (NP\_002388.2).

**Storage:**

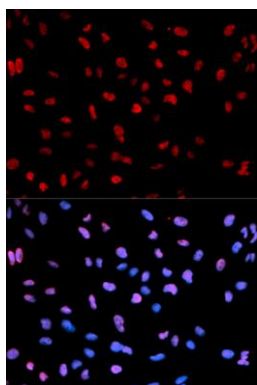
Store at -20°C. Avoid freeze / thaw cycles. Buffer: PBS with 0.02% sodium azide, 50% glycerol, pH7.3.

## Product Images

---



Western blot analysis of extracts of K-562 and MCF-7 cells, using Phospho-MEF2C-S396 antibody (CABP0075) at 1:1000 dilution. K562 cells were treated by 10% FBS for 30 minutes after serum-starvation overnight. MCF7 cells were treated by EGF (100ng/mL) for 30 minutes after serum-starvation overnight. Secondary antibody: HRP Goat Anti-Rabbit IgG (H+L) (CABS014) at 1:10000 dilution. Lysates/proteins: 25ug per lane. Blocking buffer: 3% BSA.



Immunofluorescence analysis of U2OS cells using Phospho-MEF2C-S396 antibody (CABP0075). Blue: DAPI for nuclear staining.