

Phospho-MET-Y1003 Rabbit Polyclonal Antibody



CABP0076

Product Information

Size:

20uL, 50uL, 100uL, 200uL

Observed MW:

Refer to Figures

Calculated MW:

85kDa/155kDa/157kDa

Applications:

WB IF

Reactivity:

Human, Mouse, Rat

Protein Background

This gene encodes a member of the receptor tyrosine kinase family of proteins and the product of the proto-oncogene MET. The encoded preproprotein is proteolytically processed to generate alpha and beta subunits that are linked via disulfide bonds to form the mature receptor. Further processing of the beta subunit results in the formation of the M10 peptide, which has been shown to reduce lung fibrosis. Binding of its ligand, hepatocyte growth factor, induces dimerization and activation of the receptor, which plays a role in cellular survival, embryogenesis, and cellular migration and invasion. Mutations in this gene are associated with papillary renal cell carcinoma, hepatocellular carcinoma, and various head and neck cancers. Amplification and overexpression of this gene are also associated with multiple human cancers.

Immunogen information

Gene ID:

4233

Uniprot

P08581

Antibody Information

Recommended dilutions:

WB 1:500 - 1:2000 IF 1:20 - 1:100

Source:

Rabbit

Isotype:

IgG

Purification:

Affinity purification

Synonyms:

MET; AUTS9; DFNB97; HGFR; RCCP2; c-Met

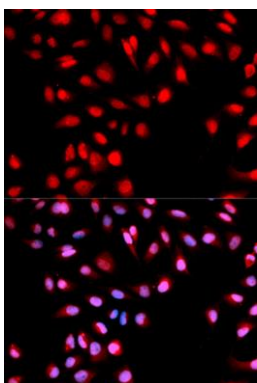
Immunogen:

A synthetic phosphorylated peptide around Y1003 of human MET (NP_000236.2).

Storage:

Store at -20°C. Avoid freeze / thaw cycles. Buffer: PBS with 0.02% sodium azide, 50% glycerol, pH7.3.

Product Images



Immunofluorescence analysis of U2OS cells using Phospho-MET-Y1003 antibody (CABP0076). Blue: DAPI for nuclear staining.