

Phospho-RAC1-S71 Rabbit Polyclonal Antibody



CABP0086

Product Information

Size:

20uL, 50uL, 100uL, 200uL

Observed MW:

28KDa

Calculated MW:

21kDa/23kDa

Applications:

WB

Reactivity:

Human, Rat

Protein Background

The protein encoded by this gene is a GTPase which belongs to the RAS superfamily of small GTP-binding proteins. Members of this superfamily appear to regulate a diverse array of cellular events, including the control of cell growth, cytoskeletal reorganization, and the activation of protein kinases. Two transcript variants encoding different isoforms have been found for this gene.

Immunogen information

Gene ID:

5879

Uniprot

P63000

Synonyms:

RAC1; MIG5; Rac-1; TC-25; p21-Rac1

Antibody Information

Recommended dilutions:

WB 1:500 - 1:2000

Source:

Rabbit

Isotype:

IgG

Purification:

Affinity purification

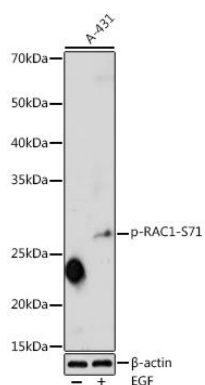
Immunogen:

A synthetic phosphorylated peptide around S71 of human RAC1 (NP_008839.2).

Storage:

Store at -20°C. Avoid freeze / thaw cycles. Buffer: PBS with 0.02% sodium azide, 50% glycerol, pH7.3.

Product Images



Western blot analysis of extracts of A-431 cells, using Phospho-RAC1-S71 antibody (CABP0086) at 1:1000 dilution. A-431 cells were treated by EGF (25 ug/ml) at 37°C for 30 minutes after serum-starvation overnight. Secondary antibody: HRP Goat Anti-Rabbit IgG (H+L) (CABS014) at 1:10000 dilution. Lysates/proteins: 25ug per lane. Blocking buffer: 3% nonfat dry milk in TBST. Detection: ECL Enhanced Kit (CABM00021). Exposure time: 180s.