

Phospho-RB-S795 Rabbit Polyclonal Antibody



CABP0088

Product Information

Size:

20uL, 50uL, 100uL, 200uL

Observed MW:

106kDa

Calculated MW:

106kDa

Applications:

WB IF

Reactivity:

Human

Protein Background

The protein encoded by this gene is a negative regulator of the cell cycle and was the first tumor suppressor gene found. The encoded protein also stabilizes constitutive heterochromatin to maintain the overall chromatin structure. The active, hypophosphorylated form of the protein binds transcription factor E2F1. Defects in this gene are a cause of childhood cancer retinoblastoma (RB), bladder cancer, and osteogenic sarcoma.

Immunogen information

Gene ID:

5925

Uniprot

P06400

Synonyms:

OSRC; PPP1R130; RB; p105-Rb; pRb; pp110; RB1; Rb

Antibody Information

Recommended dilutions:

WB 1:500 - 1:1000 IF 1:50 - 1:100

Source:

Rabbit

Isotype:

IgG

Purification:

Affinity purification

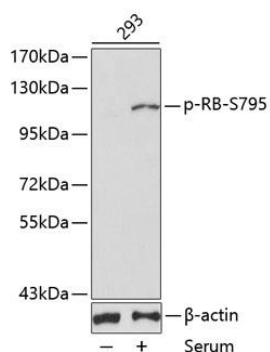
Immunogen:

A synthetic phosphorylated peptide around S795 of human RB (NP_000312.2).

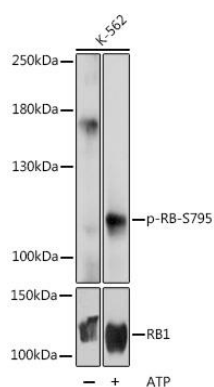
Storage:

Store at -20°C. Avoid freeze / thaw cycles. Buffer: PBS with 0.02% sodium azide, 50% glycerol, pH7.3.

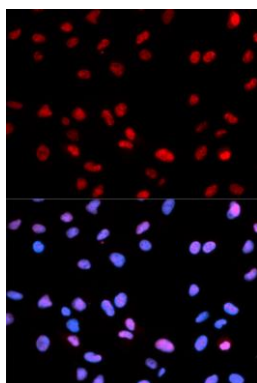
Product Images



Western blot analysis of extracts of 293 cell line, using phospho-RB-S795 antibody (CABP0088). Secondary antibody: HRP Goat Anti-Rabbit IgG (H+L) (CABS014) at 1:10000 dilution. Lysates/proteins: 25ug per lane. Blocking buffer: 3% BSA.



Western blot analysis of extracts of K-562 cells, using Phospho-RB-S795 pAb (CABP0088) at 1:1000 dilution or RB1 antibody (CAB16966). K-562 cells were treated by ATP (5 mM) at 30°C for 1 hour. Secondary antibody: HRP Goat Anti-Rabbit IgG (H+L) (CABS014) at 1:10000 dilution. Lysates/proteins: 25ug per lane. Blocking buffer: 3% BSA. Detection: ECL Basic Kit (CABM00020). Exposure time: 1s.



Immunofluorescence analysis of U2OS cells using Phospho-RB-S795 antibody (CABP0088). Blue: DAPI for nuclear staining.