

Phospho-SMC1A-S957 Rabbit Polyclonal Antibody

CABP0090



Product Information

Size:

20uL, 50uL, 100uL, 200uL

Observed MW:

160kDa

Calculated MW:

143kDa

Applications:

WB IHC IF IP

Reactivity:

Human, Mouse, Rat

Antibody Information

Recommended dilutions:

WB 1:500 - 1:2000 IHC 1:50
- 1:200 IF 1:20 - 1:100 IP
1:50 - 1:100

Source:

Rabbit

Isotype:

IgG

Purification:

Affinity purification

Protein Background

Proper cohesion of sister chromatids is a prerequisite for the correct segregation of chromosomes during cell division. The cohesin multiprotein complex is required for sister chromatid cohesion. This complex is composed partly of two structural maintenance of chromosomes (SMC) proteins, SMC3 and either SMC1B or the protein encoded by this gene. Most of the cohesin complexes dissociate from the chromosomes before mitosis, although those complexes at the kinetochore remain. Therefore, the encoded protein is thought to be an important part of functional kinetochores. In addition, this protein interacts with BRCA1 and is phosphorylated by ATM, indicating a potential role for this protein in DNA repair. This gene, which belongs to the SMC gene family, is located in an area of the X-chromosome that escapes X inactivation. Mutations in this gene result in Cornelia de Lange syndrome. Alternative splicing results in multiple transcript variants encoding different isoforms.

Immunogen information

Gene ID:

8243

Uniprot

Q14683

Synonyms:

SMC1A; CDLS2; DXS423E; SB1.8; SMC1; SMC1L1; SMC1alpha;
SMCB

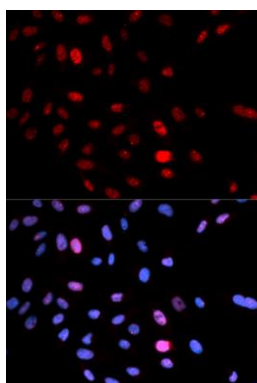
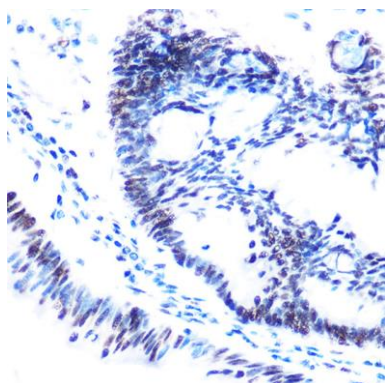
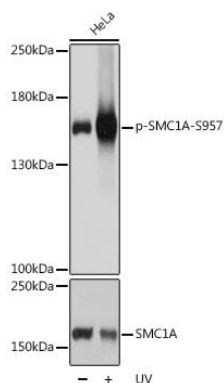
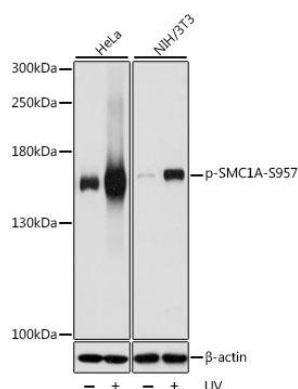
Immunogen:

A synthetic phosphorylated peptide around S957 of human SMC1A (NP_006297.2).

Storage:

Store at -20°C. Avoid freeze / thaw cycles. Buffer: PBS with 0.02% sodium azide, 50% glycerol, pH7.3.

Product Images



Western blot analysis of extracts of various cell lines, using Phospho-SMC1A-S957 antibody (CABP0090) at 1:1000 dilution. HeLa and NIH/3T3 cells were treated by UV for 15-30 minutes. Secondary antibody: HRP Goat Anti-Rabbit IgG (H+L) (CABS014) at 1:10000 dilution. Lysates/proteins: 25ug per lane. Blocking buffer: 3% BSA. Detection: ECL Basic Kit (CABM00020). Exposure time: 3s.

Western blot analysis of extracts of HeLa cells, using Phospho-SMC1A-S957 pAb (CABP0090) at 1:1000 dilution or SMC1A antibody (CAB7008). HeLa cells were treated by UV at room temperature for 15-30 minutes. Secondary antibody: HRP Goat Anti-Rabbit IgG (H+L) (CABS014) at 1:10000 dilution. Lysates/proteins: 25ug per lane. Blocking buffer: 3% BSA. Detection: ECL Basic Kit (CABM00020). Exposure time: 3s.

Immunohistochemistry of paraffin-embedded human colon carcinoma using Phospho-SMC1A-S957 Rabbit pAb (CABP0090) at dilution of 1:100 (40x lens).

Immunofluorescence analysis of U2OS cells using Phospho-SMC1A-S957 antibody (CABP0090). Blue: DAPI for nuclear staining.