

# Phospho-Histone H3-S28 Rabbit Polyclonal Antibody

CABP0097



## Product Information

### Size:

20uL, 50uL, 100uL, 200uL

### Observed MW:

17kDa

### Calculated MW:

15kDa

### Applications:

WB

### Reactivity:

Human, Mouse, Rat, Other  
(Wide Range)

## Antibody Information

### Recommended dilutions:

WB 1:500 - 1:2000

### Source:

Rabbit

### Isotype:

IgG

### Purification:

Affinity purification

## Protein Background

Histones are basic nuclear proteins that are responsible for the nucleosome structure of the chromosomal fiber in eukaryotes. This structure consists of approximately 146 bp of DNA wrapped around a nucleosome, an octamer composed of pairs of each of the four core histones (H2A, H2B, H3, and H4). The chromatin fiber is further compacted through the interaction of a linker histone, H1, with the DNA between the nucleosomes to form higher order chromatin structures. This gene is intronless and encodes a replication-dependent histone that is a member of the histone H3 family. Transcripts from this gene lack polyA tails; instead, they contain a palindromic termination element. This gene is found in the large histone gene cluster on chromosome 6p22-p21.3.

## Immunogen information

### Gene ID:

8350

### Uniprot

P68431

### Synonyms:

H3/A; H3C2; H3C3; H3C4; H3C6; H3C7; H3C8; H3FA; H3C10;  
H3C11; H3C12; HIST1H3A

### Immunogen:

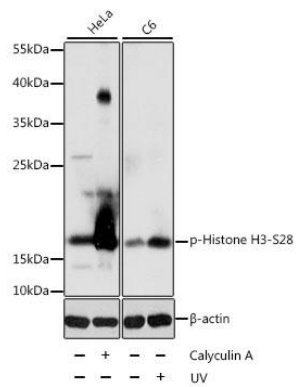
A synthetic phosphorylated peptide around S28 of human Histone H3 (NP\_003528.1).

### Storage:

Store at -20°C. Avoid freeze / thaw cycles. Buffer: PBS with 0.02% sodium azide, 50% glycerol, pH7.3.

## Product Images

---



Western blot analysis of extracts of various cell lines, using Phospho-Histone H3-S28 antibody (CABP0097) at 1:1000 dilution. HeLa cells were treated by Calyculin A (100nM) for 30 minutes after serum-starvation overnight. C6 cells were treated by UV for 15-30 minutes. Secondary antibody: HRP Goat Anti-Rabbit IgG (H+L) (CABS014) at 1:10000 dilution. Lysates/proteins: 25ug per lane. Blocking buffer: 3% BSA. Detection: ECL Basic Kit (CABM00020). Exposure time: 1s.