

Phospho-Btk-Y223 Rabbit Polyclonal Antibody



CABP0100

Product Information

Size:

20uL, 50uL, 100uL, 200uL

Observed MW:

Refer to Figures

Calculated MW:

76kDa/79kDa

Applications:

WB IF

Reactivity:

Human, Mouse, Rat

Protein Background

The protein encoded by this gene plays a crucial role in B-cell development. Mutations in this gene cause X-linked agammaglobulinemia type 1, which is an immunodeficiency characterized by the failure to produce mature B lymphocytes, and associated with a failure of Ig heavy chain rearrangement. Alternative splicing results in multiple transcript variants encoding different isoforms.

Immunogen information

Gene ID:

695

Uniprot

Q06187

Synonyms:

AGMX1; AT; ATK; BPK; IMD1; PSCTK1; XLA; BTK

Antibody Information

Recommended dilutions:

WB 1:500 - 1:2000 IF 1:20 - 1:100

Source:

Rabbit

Isotype:

IgG

Purification:

Affinity purification

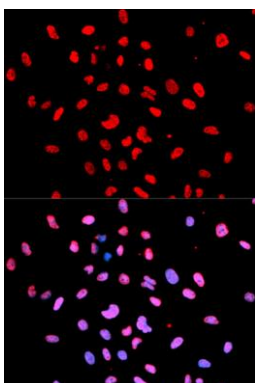
Immunogen:

A synthetic phosphorylated peptide around Y223 of human Btk (NP_000052.1).

Storage:

Store at -20°C. Avoid freeze / thaw cycles. Buffer: PBS with 0.02% sodium azide, 50% glycerol, pH7.3.

Product Images



Immunofluorescence analysis of U2OS cells using Phospho-Btk-Y223 antibody (CABP0100). Blue: DAPI for nuclear staining.