

Phospho-mTOR-S2448 Rabbit Monoclonal Antibody

CABP0115



Product Information

Size:

20uL, 50uL, 100uL

Observed MW:

289KDa

Calculated MW:

289kDa

Applications:

WB

Reactivity:

Human, Mouse

Protein Background

The protein encoded by this gene belongs to a family of phosphatidylinositol kinase-related kinases. These kinases mediate cellular responses to stresses such as DNA damage and nutrient deprivation. This protein acts as the target for the cell-cycle arrest and immunosuppressive effects of the FKBP12-rapamycin complex. The ANGPTL7 gene is located in an intron of this gene. [provided by RefSeq, Sep 2008]

Immunogen information

Gene ID:

2475

Uniprot

P42345

Synonyms:

FRAP; FRAP1; FRAP2; RAFT1; RAPT1; SKS; mTOR; MTOR

Antibody Information

Recommended dilutions:

WB 1:500 - 1:2000

Source:

Rabbit

Isotype:

IgG

Purification:

Affinity purification

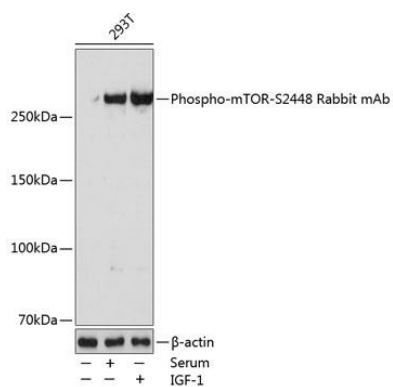
Immunogen:

A synthesized peptide derived from human Phospho-mTOR (S2448).

Storage:

Store at -20°C. Avoid freeze / thaw cycles. Buffer: PBS with 0.02% sodium azide, 0.05% BSA, 50% glycerol, pH7.3.

Product Images



Western blot - Phospho-mTOR-S2448 Rabbit mAb (CABP0115)