

Phospho-AMPKa1-T183/AMPKa2-T172 Rabbit Polyclonal Antibody

CABP0116



Product Information

Size:

20uL, 50uL, 100uL, 200uL

Observed MW:

64kDa

Calculated MW:

64kDa/65kDa

Applications:

WB IHC IP

Reactivity:

Human, Mouse, Rat

Antibody Information

Recommended dilutions:

WB 1:500 - 1:2000 IHC 1:50
- 1:100 IP 1:50 - 1:100

Source:

Rabbit

Isotype:

IgG

Purification:

Affinity purification

Protein Background

The protein encoded by this gene belongs to the ser/thr protein kinase family. It is the catalytic subunit of the 5'-prime-AMP-activated protein kinase (AMPK). AMPK is a cellular energy sensor conserved in all eukaryotic cells. The kinase activity of AMPK is activated by the stimuli that increase the cellular AMP/ATP ratio. AMPK regulates the activities of a number of key metabolic enzymes through phosphorylation. It protects cells from stresses that cause ATP depletion by switching off ATP-consuming biosynthetic pathways. Alternatively spliced transcript variants encoding distinct isoforms have been observed. [provided by RefSeq, Jul 2008]

Immunogen information

Gene ID:

5562/5563

Uniprot

Q13131/P54646

Synonyms:

AMPKa1/AMPKa2

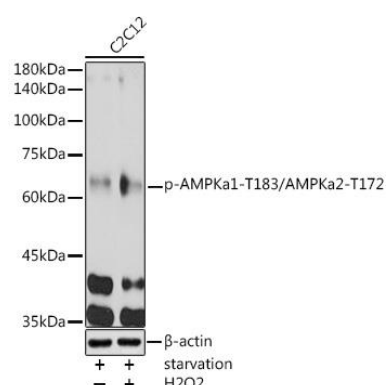
Immunogen:

A phospho specific peptide corresponding to residues surrounding T172 of human AMPKAlpha

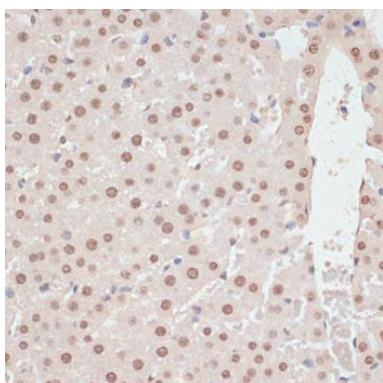
Storage:

Store at -20°C. Avoid freeze / thaw cycles. Buffer: PBS with 0.02% sodium azide, 50% glycerol, pH7.3.

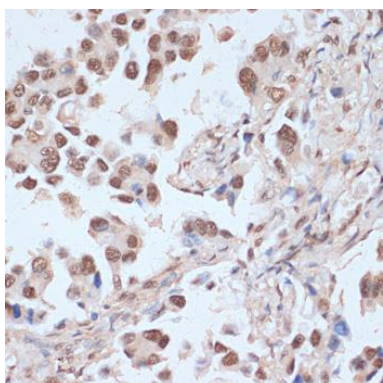
Product Images



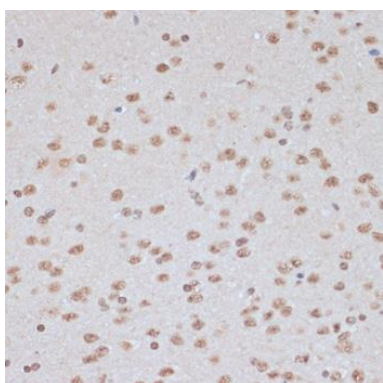
Western blot analysis of extracts of C2C12 cells, using Phospho-AMPKα1-T183/AMPKα2-T172 antibody (CABP0116) at 1:1000 dilution. C2C12 cells were treated by Hydrogen Peroxide (2 nM) at 37°C for 15 minutes after serum-starvation overnight. Secondary antibody: HRP Goat Anti-Rabbit IgG (H+L) (CABS014) at 1:10000 dilution. Lysates/proteins: 25ug per lane. Blocking buffer: 3% nonfat dry milk in TBST. Detection: ECL Basic Kit (CABM00020). Exposure time: 180s.



Immunohistochemistry of paraffin-embedded rat liver using Phospho-PRKAA1-T183-PRKAA2-T172 antibody (CABP0116) at dilution of 1:100 (40x lens).



Immunohistochemistry of paraffin-embedded human lung cancer using Phospho-PRKAA1-T183-PRKAA2-T172 antibody (CABP0116) at dilution of 1:100 (40x lens).



Immunohistochemistry of paraffin-embedded mouse brain using Phospho-PRKAA1-T183-PRKAA2-T172 antibody (CABP0116) at dilution of 1:100 (40x lens).