

# Phospho-RB-S780 Rabbit Monoclonal Antibody



CABP0117

---

## Product Information

### Size:

20uL, 50uL, 100uL

### Observed MW:

106KDa

### Calculated MW:

106kDa

### Applications:

WB IHC

### Reactivity:

Human, Mouse, Rat

## Protein Background

The protein encoded by this gene is a negative regulator of the cell cycle and was the first tumor suppressor gene found. The encoded protein also stabilizes constitutive heterochromatin to maintain the overall chromatin structure. The active, hypophosphorylated form of the protein binds transcription factor E2F1. Defects in this gene are a cause of childhood cancer retinoblastoma (RB), bladder cancer, and osteogenic sarcoma. [provided by RefSeq, Jul 2008]

## Immunogen information

### Gene ID:

5925

### Uniprot

P06400

### Synonyms:

OSRC; PPP1R130; RB; p105-Rb; pRb; pp110; RB1; Rb

## Antibody Information

### Recommended dilutions:

WB 1:500 - 1:2000 IHC 1:50  
- 1:200

### Source:

Rabbit

### Isotype:

IgG

### Purification:

Affinity purification

### Immunogen:

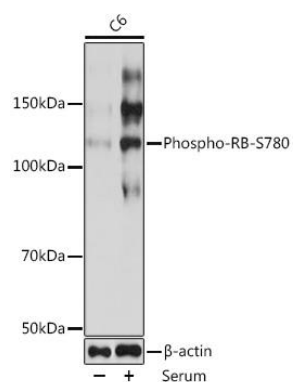
A phospho synthetic peptide corresponding to residues surrounding S780 of human RB.

### Storage:

Store at -20°C. Avoid freeze / thaw cycles. Buffer: PBS with 0.02% sodium azide, 0.05% BSA, 50% glycerol, pH7.3.

## Product Images

---



Western blot - Phospho-RB-S780 Rabbit mAb (CABP0117)