

Phospho-STAT4-Y693 Rabbit Polyclonal Antibody



CABP0137

Product Information

Size:

50uL, 100uL, 200uL

Observed MW:

86kDa

Calculated MW:

85kDa

Applications:

WB IHC

Reactivity:

Human, Mouse, Rat

Antibody Information

Recommended dilutions:

WB 1:500 - 1:2000 IHC 1:50
- 1:100

Source:

Rabbit

Isotype:

IgG

Purification:

Affinity purification

Protein Background

The protein encoded by this gene is a member of the STAT family of transcription factors. In response to cytokines and growth factors, STAT family members are phosphorylated by the receptor associated kinases, and then form homo- or heterodimers that translocate to the cell nucleus where they act as transcription activators. This protein is essential for mediating responses to IL12 in lymphocytes, and regulating the differentiation of T helper cells. Mutations in this gene may be associated with systemic lupus erythematosus and rheumatoid arthritis. Alternate splicing results in multiple transcript variants that encode the same protein.

Immunogen information

Gene ID:

6775

Uniprot

Q14765

Synonyms:

STAT4; SLEB11

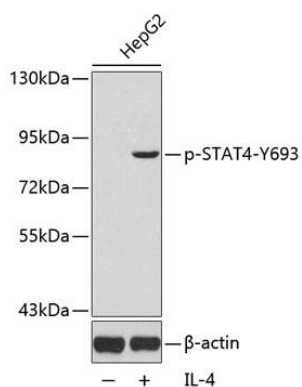
Immunogen:

A phospho specific peptide corresponding to residues surrounding Y693 of human STAT4

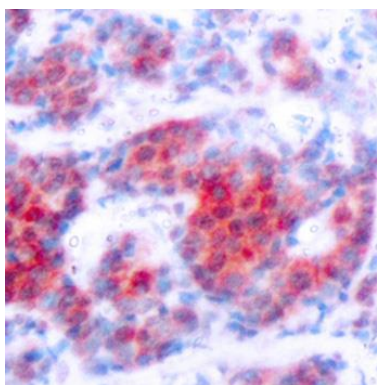
Storage:

Store at -20°C. Avoid freeze / thaw cycles. Buffer: PBS with 0.02% sodium azide, 50% glycerol, pH7.3.

Product Images



Western blot analysis of extracts from HepG2 cells using Phospho-STAT4-Y693 antibody (CABP0137). HepG2 cells were treated by IL-4 (100 ng/mL) at 37°C for 30 minutes after serum-starvation overnight. Secondary antibody: HRP Goat Anti-Rabbit IgG (H+L) (CABS014) at 1:10000 dilution. Lysates/proteins: 25ug per lane. Blocking buffer: 3% BSA.



Immunohistochemistry of paraffin-embedded human breast carcinoma using Phospho-STAT4-Y693 antibody (CABP0137).