

# Phospho-Estrogen Receptor alpha-S118 Rabbit Polyclonal Antibody

## CABP0146



### Product Information

**Size:**

20uL, 50uL, 100uL, 200uL

**Observed MW:**

66kDa

**Calculated MW:**

35kDa/47kDa/53kDa/66kDa

**Applications:**

WB IHC IF

**Reactivity:**

Human

### Antibody Information

**Recommended dilutions:**

WB 1:500 - 1:2000 IHC 1:50  
- 1:100 IF 1:100 - 1:200

**Source:**

Rabbit

**Isotype:**

IgG

**Purification:**

Affinity purification

### Protein Background

This gene encodes an estrogen receptor, a ligand-activated transcription factor composed of several domains important for hormone binding, DNA binding, and activation of transcription. The protein localizes to the nucleus where it may form a homodimer or a heterodimer with estrogen receptor 2. Estrogen and its receptors are essential for sexual development and reproductive function, but also play a role in other tissues such as bone. Estrogen receptors are also involved in pathological processes including breast cancer, endometrial cancer, and osteoporosis. Alternative promoter usage and alternative splicing result in dozens of transcript variants, but the full-length nature of many of these variants has not been determined.

### Immunogen information

**Gene ID:**

2099

**Uniprot**

P03372

**Synonyms:**

ESR1; ER; ESR; ESRA; ESTRR; Era; NR3A1; ER alpha

**Immunogen:**

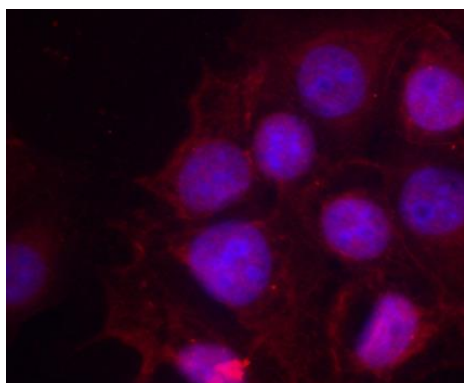
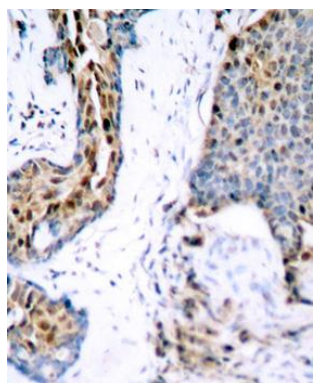
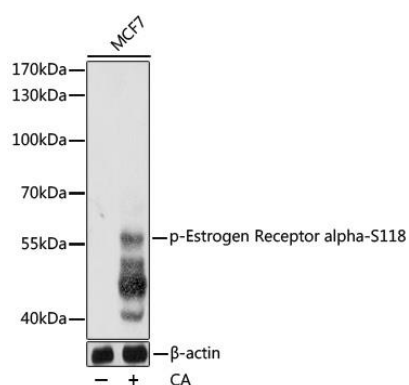
A phospho specific peptide corresponding to residues surrounding S118 of human Estrogen Receptor alpha

**Storage:**

Store at -20°C. Avoid freeze / thaw cycles. Buffer: PBS with 0.02% sodium azide, 50% glycerol, pH7.3.

## Product Images

---



Western blot analysis of extracts of MCF7 cells, using Phospho-Estrogen Receptor alpha-S118 pAb (CABP0146) at 1:1000 dilution. MCF7 cells were treated by Calyculin A (100 nM) at 37°C for 30 minutes after serum-starvation overnight. Secondary antibody: HRP Goat Anti-Rabbit IgG (H+L) (CABS014) at 1:10000 dilution. Lysates/proteins: 25ug per lane. Blocking buffer: 3% BSA. Detection: ECL Basic Kit (CABM00020). Exposure time: 1s.

Immunohistochemistry of paraffin-embedded human breast carcinoma using Phospho-Estrogen Receptor alpha-S118 antibody (CABP0146).

Immunofluorescence analysis of methanol-fixed MCF-7 cells using Phospho-Estrogen Receptor alpha-S118 antibody (CABP0146).