

Phospho-EGFR-S1070 Rabbit Polyclonal Antibody



CABP0153

Product Information

Size:

50uL, 100uL, 200uL

Observed MW:

180kDa

Calculated MW:

44kDa/69kDa/77kDa/134kDa

Applications:

WB

Reactivity:

Human

Antibody Information

Recommended dilutions:

WB 1:500 - 1:1000

Source:

Rabbit

Isotype:

IgG

Purification:

Affinity purification

Protein Background

The protein encoded by this gene is a transmembrane glycoprotein that is a member of the protein kinase superfamily. This protein is a receptor for members of the epidermal growth factor family. EGFR is a cell surface protein that binds to epidermal growth factor. Binding of the protein to a ligand induces receptor dimerization and tyrosine autophosphorylation and leads to cell proliferation. Mutations in this gene are associated with lung cancer.

Immunogen information

Gene ID:

1956

Uniprot

P00533

Synonyms:

EGFR; ERBB; ERBB1; HER1; NISBD2; PIG61; mENA

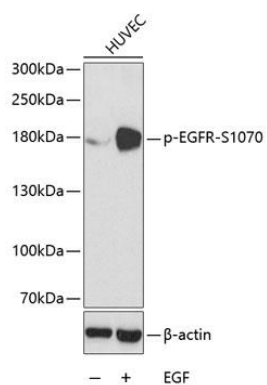
Immunogen:

A phospho specific peptide corresponding to residues surrounding S1070 of human EGFR

Storage:

Store at -20°C. Avoid freeze / thaw cycles. Buffer: PBS with 0.02% sodium azide, 50% glycerol, pH7.3.

Product Images



Western blot analysis of extracts from HUVEC cells, using phospho-EGFR-S1070 antibody (CABP0153). Secondary antibody: HRP Goat Anti-Rabbit IgG (H+L) (CABS014) at 1:10000 dilution. Lysates/proteins: 25ug per lane. Blocking buffer: 3% BSA.