

Phospho-GRIN1-S896 Rabbit Polyclonal Antibody



CABP0165

Product Information

Size:

20uL, 50uL, 100uL, 200uL

Observed MW:

120kDa

Calculated MW:

99kDa/101kDa/103kDa/105kDa/106kDa/107kDa

Applications:

WB

Reactivity:

Human, Mouse, Rat

Antibody Information

Recommended dilutions:

WB 1:500 - 1:2000

Source:

Rabbit

Isotype:

IgG

Purification:

Affinity purification

Protein Background

The protein encoded by this gene is a critical subunit of N-methyl-D-aspartate receptors, members of the glutamate receptor channel superfamily which are heteromeric protein complexes with multiple subunits arranged to form a ligand-gated ion channel. These subunits play a key role in the plasticity of synapses, which is believed to underlie memory and learning. Cell-specific factors are thought to control expression of different isoforms, possibly contributing to the functional diversity of the subunits. Alternatively spliced transcript variants have been described.

Immunogen information

Gene ID:

2902

Uniprot

Q05586

Synonyms:

GRIN1; GluN1; MRD8; NMD-R1; NMDA1; NMDAR1; NR1; NMDA 1

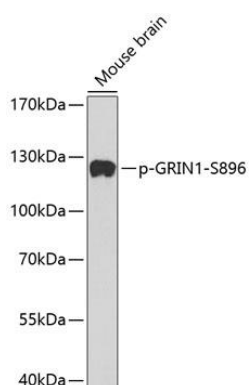
Immunogen:

A phospho specific peptide corresponding to residues surrounding S896 of human GRIN1

Storage:

Store at -20°C. Avoid freeze / thaw cycles. Buffer: PBS with 0.02% sodium azide, 50% glycerol, pH7.3.

Product Images



Western blot analysis of extracts from mouse Brain tissue, using phospho-GRIN1-S896 antibody (CABP0165). Secondary antibody: HRP Goat Anti-Rabbit IgG (H+L) (CABS014) at 1:10000 dilution. Lysates/proteins: 25ug per lane. Blocking buffer: 3% BSA.