

# Phospho-P90RSK-T348 Rabbit Polyclonal Antibody

## CABP0166



### Product Information

**Size:**

50uL, 100uL, 200uL

**Observed MW:**

83kDa

**Calculated MW:**

72kDa/81kDa/82kDa/83kDa

**Applications:**

WB IHC IF

**Reactivity:**

Human, Mouse, Rat

### Protein Background

This gene encodes a member of the RSK (ribosomal S6 kinase) family of serine/threonine kinases. This kinase contains 2 nonidentical kinase catalytic domains and phosphorylates various substrates, including members of the mitogen-activated kinase (MAPK) signalling pathway. The activity of this protein has been implicated in controlling cell growth and differentiation. Alternate transcriptional splice variants, encoding different isoforms, have been characterized.

### Immunogen information

**Gene ID:**

6195

**Uniprot**

Q15418

**Synonyms:**

HU-1; MAPKAPK1A; RSK; RSK1; p90Rsk; RPS6KA1

### Antibody Information

**Recommended dilutions:**

WB 1:500 - 1:2000 IHC 1:50  
- 1:100 IF 1:100 - 1:200

**Source:**

Rabbit

**Isotype:**

IgG

**Purification:**

Affinity purification

**Immunogen:**

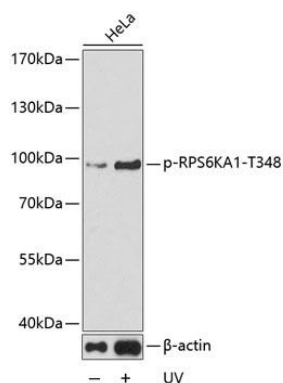
A phospho specific peptide corresponding to residues surrounding T348 of human P90RSK

**Storage:**

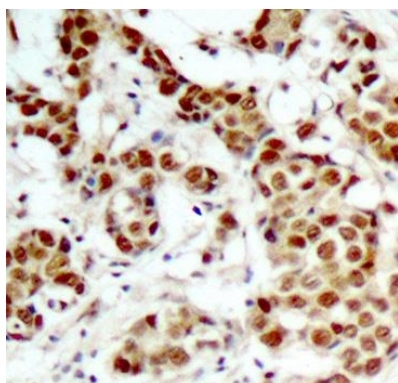
Store at -20°C. Avoid freeze / thaw cycles. Buffer: PBS with 0.02% sodium azide, 50% glycerol, pH7.3.

## Product Images

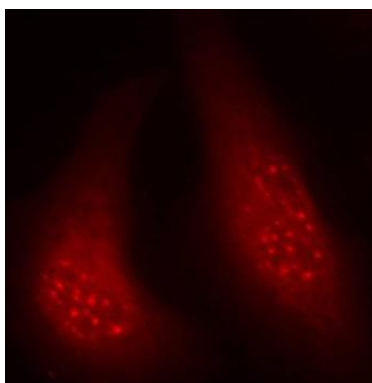
---



Western blot analysis of extracts from HeLa cells, using phospho-RPS6KA1-T348 antibody (CABP0166). Secondary antibody: HRP Goat Anti-Rabbit IgG (H+L) (CABS014) at 1:10000 dilution. Lysates/proteins: 25ug per lane. Blocking buffer: 3% BSA.



Immunohistochemistry of paraffin-embedded human breast carcinoma tissue, using Phospho-RPS6KA1-T348 antibody (CABP0166).



Immunofluorescence analysis of methanol-fixed HeLa cells using Phospho-RPS6KA1-T348 antibody (CABP0166).