

Phospho-CFL1-S3 Rabbit Polyclonal Antibody



CABP0178

Product Information

Size:

20uL, 50uL, 100uL, 200uL

Observed MW:

18kDa

Calculated MW:

18kDa

Applications:

WB IHC IF

Reactivity:

Human, Mouse, Rat

Protein Background

The protein encoded by this gene can polymerize and depolymerize F-actin and G-actin in a pH-dependent manner. Increased phosphorylation of this protein by LIM kinase aids in Rho-induced reorganization of the actin cytoskeleton. Cofilin is a widely distributed intracellular actin-modulating protein that binds and depolymerizes filamentous F-actin and inhibits the polymerization of monomeric G-actin in a pH-dependent manner. It is involved in the translocation of actin-cofilin complex from cytoplasm to nucleus.[supplied by OMIM, Apr 2004]

Immunogen information

Gene ID:

1072

Uniprot

P23528

Synonyms:

CFL1; CFL; HEL-S-15; cofilin; cofilin-1

Antibody Information

Recommended dilutions:

WB 1:500 - 1:2000 IHC 1:50
- 1:100 IF 1:100 - 1:200

Source:

Rabbit

Isotype:

IgG

Purification:

Affinity purification

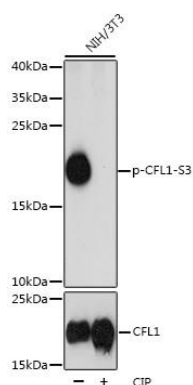
Immunogen:

A phospho specific peptide corresponding to residues surrounding S3 of human CFL1

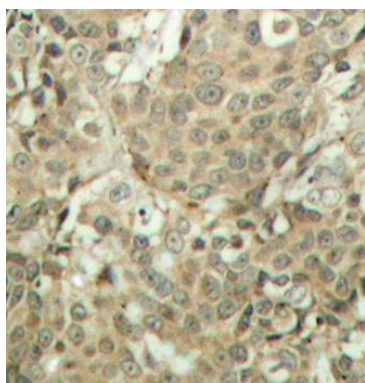
Storage:

Store at -20°C. Avoid freeze / thaw cycles. Buffer: PBS with 0.02% sodium azide, 50% glycerol, pH7.3.

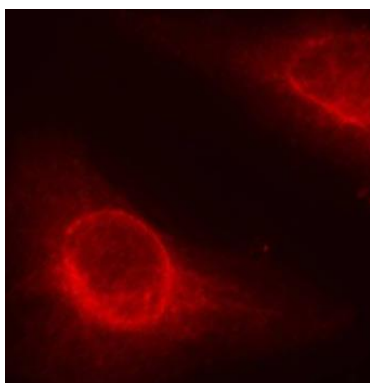
Product Images



Western blot analysis of extracts of NIH/3T3 cells, using Phospho-CFL1-S3 pAb (CABP0178) at 1:1000 dilution or CFL1 antibody (CAB1704). NIH/3T3 cells were treated by CIP (20uL/400ul) at 37°C for 1 hour. Secondary antibody: HRP Goat Anti-Rabbit IgG (H+L) (CABS014) at 1:10000 dilution. Lysates/proteins: 25ug per lane. Blocking buffer: 3% BSA. Detection: ECL Basic Kit (CABM00020). Exposure time: 3s.



Immunohistochemistry of paraffin-embedded human breast carcinoma tissue, using Phospho-CFL1-S3 antibody (CABP0178).



Immunofluorescence analysis of methanol-fixed HeLa cells using Phospho-CFL1-S3 antibody (CABP0178).