

Phospho-SRC-Y529 Rabbit Polyclonal Antibody



CABP0185

Product Information

Size:

20uL, 50uL, 100uL, 200uL

Observed MW:

60KDa

Calculated MW:

59kDa/60kDa

Applications:

WB IHC IF

Reactivity:

Human, Mouse

Protein Background

This gene is highly similar to the v-src gene of Rous sarcoma virus. This proto-oncogene may play a role in the regulation of embryonic development and cell growth. The protein encoded by this gene is a tyrosine-protein kinase whose activity can be inhibited by phosphorylation by c-SRC kinase. Mutations in this gene could be involved in the malignant progression of colon cancer. Two transcript variants encoding the same protein have been found for this gene.

Immunogen information

Gene ID:

6714

Uniprot

P12931

Synonyms:

ASV; SRC1; THC6; c-SRC; p60-Src; SRC

Antibody Information

Recommended dilutions:

WB 1:500 - 1:2000 IHC 1:50
- 1:100 IF 1:100 - 1:200

Source:

Rabbit

Isotype:

IgG

Purification:

Affinity purification

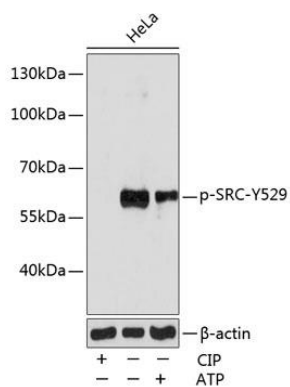
Immunogen:

A synthetic phosphorylated peptide around Y529 of human SRC (NP_005408.1).

Storage:

Store at -20°C. Avoid freeze / thaw cycles. Buffer: PBS with 0.02% sodium azide, 50% glycerol, pH7.3.

Product Images



Western blot analysis of extracts of various cell lines, using Phospho-SRC-Y529 pAb (CABP0185) at 1:1000 dilution. HeLa cells were treated by ATP (5 mM) at 30°C for 1 hour or treated by CIP (20 μ L/400 μ l) at 37°C for 1 hour. Secondary antibody: HRP Goat Anti-Rabbit IgG (H+L) (CABS014) at 1:10000 dilution. Lysates/proteins: 25 μ g per lane. Blocking buffer: 3% nonfat dry milk in TBST. Detection: ECL Enhanced Kit (CABM00021). Exposure time: 180s.