

# Phospho-YWHAZ-S58 Rabbit Polyclonal Antibody



CABP0195

## Product Information

### Size:

50uL, 100uL, 200uL

### Observed MW:

28kDa

### Calculated MW:

19kDa/27kDa

### Applications:

WB IHC IF

### Reactivity:

Human, Mouse, Rat

## Protein Background

This gene product belongs to the 14-3-3 family of proteins which mediate signal transduction by binding to phosphoserine-containing proteins. This highly conserved protein family is found in both plants and mammals, and this protein is 99% identical to the mouse, rat and sheep orthologs. The encoded protein interacts with IRS1 protein, suggesting a role in regulating insulin sensitivity. Several transcript variants that differ in the 5' UTR but that encode the same protein have been identified for this gene.

## Immunogen information

### Gene ID:

7534

### Uniprot

P63104

### Synonyms:

YWHAZ; 14-3-3-zeta; HEL-S-3; HEL-S-93; HEL4; KCIP-1; YWHAD

## Antibody Information

### Recommended dilutions:

WB 1:500 - 1:2000 IHC 1:50  
- 1:100 IF 1:100 - 1:200

### Source:

Rabbit

### Isotype:

IgG

### Purification:

Affinity purification

### Immunogen:

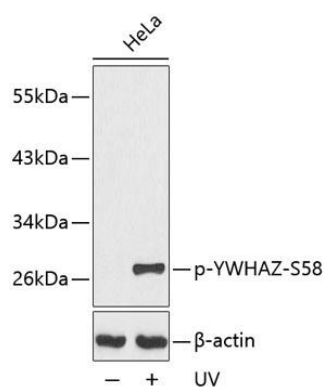
A phospho specific peptide corresponding to residues surrounding S58 of human YWHAZ

### Storage:

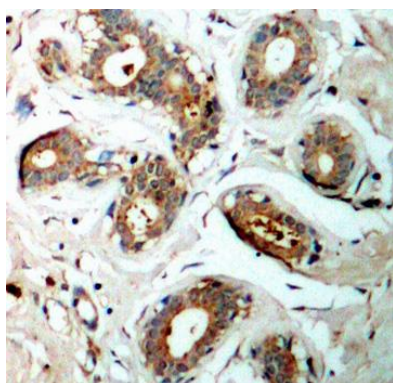
Store at -20°C. Avoid freeze / thaw cycles. Buffer: PBS with 0.02% sodium azide, 50% glycerol, pH7.3.

## Product Images

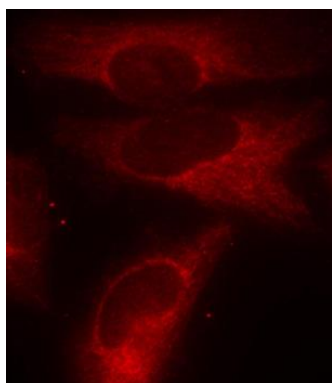
---



Western blot analysis of extracts from HeLa cells, using Phospho-YWHAZ-S58 antibody (CABP0195). Secondary antibody: HRP Goat Anti-Rabbit IgG (H+L) (CABS014) at 1:10000 dilution. Lysates/proteins: 25ug per lane. Blocking buffer: 3% BSA.



Immunohistochemistry of paraffin-embedded human breast carcinoma using Phospho-YWHAZ-S58 antibody (CABP0195).



Immunofluorescence analysis of methanol-fixed HeLa cells using Phospho-YWHAZ-S58 antibody (CABP0195).