

Phospho-ADD1-S726 Rabbit Polyclonal Antibody



CABP0196

Product Information

Size:

50uL, 100uL, 200uL

Observed MW:

130kDa

Calculated MW:

56kDa/69kDa/73kDa/80kDa/
84kDa

Applications:

WB IHC IF

Reactivity:

Human, Mouse, Rat

Antibody Information

Recommended dilutions:

WB 1:500 - 1:2000 IHC 1:50
- 1:100 IF 1:100 - 1:200

Source:

Rabbit

Isotype:

IgG

Purification:

Affinity purification

Protein Background

Adducins are a family of cytoskeleton proteins encoded by three genes (alpha, beta, gamma). Adducin is a heterodimeric protein that consists of related subunits, which are produced from distinct genes but share a similar structure. Alpha- and beta-adducin include a protease-resistant N-terminal region and a protease-sensitive, hydrophilic C-terminal region. Alpha- and gamma-adducins are ubiquitously expressed. In contrast, beta-adducin is expressed at high levels in brain and hematopoietic tissues. Adducin binds with high affinity to Ca(2+)/calmodulin and is a substrate for protein kinases A and C. Alternative splicing results in multiple variants encoding distinct isoforms; however, not all variants have been fully described.

Immunogen information

Gene ID:

118

Uniprot

P35611

Synonyms:

ADD1; ADDA; adducin 1

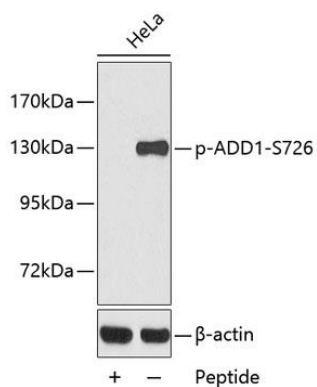
Immunogen:

A phospho specific peptide corresponding to residues surrounding S726 of human ADD1

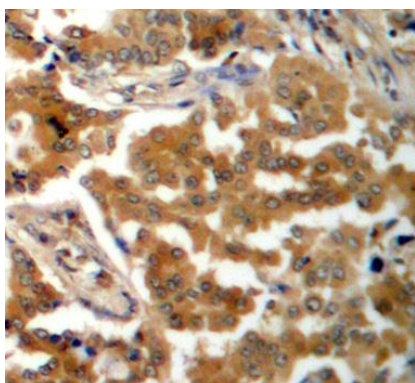
Storage:

Store at -20°C. Avoid freeze / thaw cycles. Buffer: PBS with 0.02% sodium azide, 50% glycerol, pH7.3.

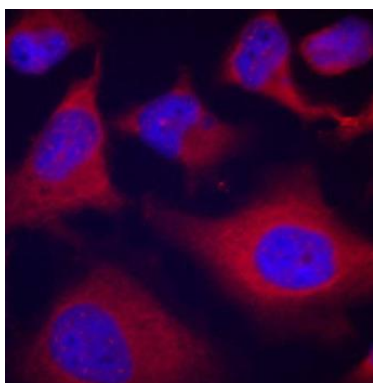
Product Images



Western blot analysis of extracts from HeLa cells using Phospho-ADD1-S726 antibody (CABP0196). Secondary antibody: HRP Goat Anti-Rabbit IgG (H+L) (CABS014) at 1:10000 dilution. Lysates/proteins: 25ug per lane. Blocking buffer: 3% BSA.



Immunohistochemistry of paraffin-embedded human lung carcinoma using Phospho-ADD1-S726 antibody (CABP0196).



Immunofluorescence analysis of methanol-fixed HeLa cells using Phospho-ADD1-S726 antibody (CABP0196).