

# Phospho-Hsp90 beta-S254 Rabbit Polyclonal Antibody

## CABP0203



### Product Information

**Size:**

50uL, 100uL, 200uL

**Observed MW:**

83kDa

**Calculated MW:**

83kDa

**Applications:**

WB

**Reactivity:**

Human, Mouse

### Protein Background

This gene encodes a member of the heat shock protein 90 family; these proteins are involved in signal transduction, protein folding and degradation and morphological evolution. This gene encodes the constitutive form of the cytosolic 90 kDa heat-shock protein and is thought to play a role in gastric apoptosis and inflammation. Alternative splicing results in multiple transcript variants. Pseudogenes have been identified on multiple chromosomes.

### Immunogen information

**Gene ID:**

3326

**Uniprot**

P08238

**Synonyms:**

D6S182; HSP84; HSP90B; HSPC2; HSPCB; Hsp90 beta; HSP90AB1

### Antibody Information

**Recommended dilutions:**

WB 1:500 - 1:2000

**Source:**

Rabbit

**Isotype:**

IgG

**Purification:**

Affinity purification

**Immunogen:**

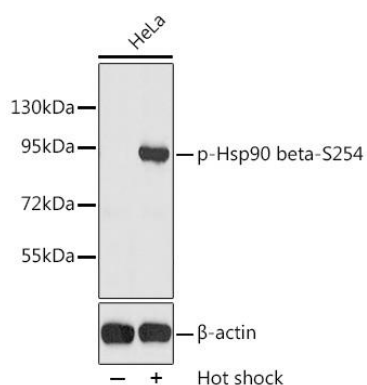
A phospho specific peptide corresponding to residues surrounding S254 of human Hsp90 beta

**Storage:**

Store at -20°C. Avoid freeze / thaw cycles. Buffer: PBS with 0.02% sodium azide, 50% glycerol, pH7.3.

## Product Images

---



Western blot analysis of extracts from HeLa cells, using Phospho-HSP90AB1-S254 antibody (CABP0203). Secondary antibody: HRP Goat Anti-Rabbit IgG (H+L) (CABS014) at 1:10000 dilution. Lysates/proteins: 25ug per lane. Blocking buffer: 3% BSA.