

# Phospho-EZR-T567 Rabbit Polyclonal Antibody



CABP0207

## Product Information

### Size:

50uL, 100uL, 200uL

### Observed MW:

80kDa

### Calculated MW:

69kDa

### Applications:

WB

### Reactivity:

Human, Mouse, Rat

## Protein Background

The cytoplasmic peripheral membrane protein encoded by this gene functions as a protein-tyrosine kinase substrate in microvilli. As a member of the ERM protein family, this protein serves as an intermediate between the plasma membrane and the actin cytoskeleton. This protein plays a key role in cell surface structure adhesion, migration and organization, and it has been implicated in various human cancers. A pseudogene located on chromosome 3 has been identified for this gene. Alternatively spliced variants have also been described for this gene.

## Immunogen information

### Gene ID:

7430

### Uniprot

P15311

### Synonyms:

CVIL; CVL; HEL-S-105; VIL2; EZR; Ezrin; ezrin

## Antibody Information

### Recommended dilutions:

WB 1:500 - 1:2000

### Source:

Rabbit

### Isotype:

IgG

### Purification:

Affinity purification

### Immunogen:

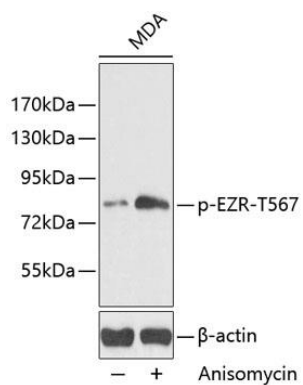
A phospho specific peptide corresponding to residues surrounding T567 of human EZR

### Storage:

Store at -20°C. Avoid freeze / thaw cycles. Buffer: PBS with 0.02% sodium azide, 50% glycerol, pH7.3.

## Product Images

---



Western blot analysis of extracts from MDA cells, using Phospho-EZR-T567 antibody (CABP0207). Secondary antibody: HRP Goat Anti-Rabbit IgG (H+L) (CABS014) at 1:10000 dilution. Lysates/proteins: 25ug per lane. Blocking buffer: 3% BSA.