

# Phospho-MAP2K1-S217/MAP2K2-S221 Rabbit Polyclonal Antibody

CABP0209



## Product Information

### Size:

50uL, 100uL, 200uL

### Observed MW:

44kDa

### Calculated MW:

40kDa/43kDa/44kDa

### Applications:

WB

### Reactivity:

Human, Mouse, Rat

## Antibody Information

### Recommended dilutions:

WB 1:500 - 1:1000

### Source:

Rabbit

### Isotype:

IgG

### Purification:

Affinity purification

## Protein Background

The protein encoded by this gene is a member of the dual specificity protein kinase family, which acts as a mitogen-activated protein (MAP) kinase kinase. MAP kinases, also known as extracellular signal-regulated kinases (ERKs), act as an integration point for multiple biochemical signals. This protein kinase lies upstream of MAP kinases and stimulates the enzymatic activity of MAP kinases upon wide variety of extra- and intracellular signals. As an essential component of MAP kinase signal transduction pathway, this kinase is involved in many cellular processes such as proliferation, differentiation, transcription regulation and development. [provided by RefSeq, Jul 2008]

## Immunogen information

### Gene ID:

5604/5605

### Uniprot

Q02750/P36507

### Synonyms:

MEK1/MEK2

### Immunogen:

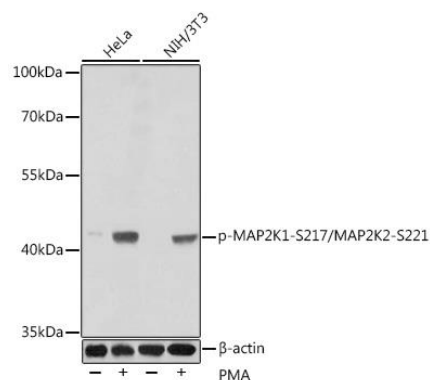
A phospho specific peptide corresponding to residues surrounding serine 217/221 of human MAP2K1/MAP2K2.

### Storage:

Store at -20°C. Avoid freeze / thaw cycles. Buffer: PBS with 0.02% sodium azide, 50% glycerol, pH7.3.

## Product Images

---



Western blot analysis of extracts of various cell lines, using Phospho-MAP2K1-S217/MAP2K2-S221 antibody (CABP0209) at dilution. HeLa cells were treated by PMA/TPA (200 nM) at 37°C for 15 minutes after serum-starvation overnight. NIH/3T3 cells were treated by PMA/TPA (200 nM) at 37°C for 30 minutes after serum-starvation overnight. Secondary antibody: HRP Goat Anti-Rabbit IgG (H+L) (CABS014) at 1:10000 dilution. Lysates/proteins: 25ug per lane. Blocking buffer: 3% nonfat dry milk in TBST.