

Phospho-TH-S31 Rabbit Polyclonal Antibody



CABP0210

Product Information

Size:

50uL, 100uL, 200uL

Observed MW:

55kDa

Calculated MW:

44kDa/45kDa/55kDa/56kDa/
58kDa

Applications:

WB

Reactivity:

Human, Rat

Protein Background

The protein encoded by this gene is involved in the conversion of tyrosine to dopamine. It is the rate-limiting enzyme in the synthesis of catecholamines, hence plays a key role in the physiology of adrenergic neurons. Mutations in this gene have been associated with autosomal recessive Segawa syndrome. Alternatively spliced transcript variants encoding different isoforms have been noted for this gene.

Immunogen information

Gene ID:

7054

Uniprot

P07101

Synonyms:

DYT14; DYT5b; TYH; TH

Antibody Information

Recommended dilutions:

WB 1:500 - 1:2000

Source:

Rabbit

Isotype:

IgG

Purification:

Affinity purification

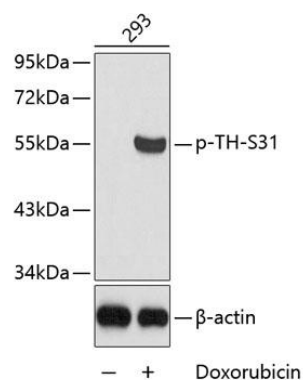
Immunogen:

A phospho specific peptide corresponding to residues surrounding S31 of human TH

Storage:

Store at -20°C. Avoid freeze / thaw cycles. Buffer: PBS with 0.02% sodium azide, 50% glycerol, pH7.3.

Product Images



Western blot analysis of extracts from 293 cells, using Phospho-TH-S31 antibody (CABP0210). Secondary antibody: HRP Goat Anti-Rabbit IgG (H+L) (CABS014) at 1:10000 dilution. Lysates/proteins: 25ug per lane. Blocking buffer: 3% BSA.