

# Phospho-PTK2B-Y402 Rabbit Polyclonal Antibody



CABP0214

## Product Information

### Size:

50uL, 100uL, 200uL

### Observed MW:

116kDa

### Calculated MW:

111kDa/115kDa

### Applications:

WB IHC IF

### Reactivity:

Human, Mouse, Rat

## Antibody Information

### Recommended dilutions:

WB 1:500 - 1:2000 IHC 1:50  
- 1:100 IF 1:100 - 1:200

### Source:

Rabbit

### Isotype:

IgG

### Purification:

Affinity purification

## Protein Background

This gene encodes a cytoplasmic protein tyrosine kinase which is involved in calcium-induced regulation of ion channels and activation of the map kinase signaling pathway. The encoded protein may represent an important signaling intermediate between neuropeptide-activated receptors or neurotransmitters that increase calcium flux and the downstream signals that regulate neuronal activity. The encoded protein undergoes rapid tyrosine phosphorylation and activation in response to increases in the intracellular calcium concentration, nicotinic acetylcholine receptor activation, membrane depolarization, or protein kinase C activation. This protein has been shown to bind CRK-associated substrate, nephrocystin, GTPase regulator associated with FAK, and the SH2 domain of GRB2. The encoded protein is a member of the FAK subfamily of protein tyrosine kinases but lacks significant sequence similarity to kinases from other subfamilies. Four transcript variants encoding two different isoforms have been found for this gene.

## Immunogen information

### Gene ID:

2185

### Uniprot

Q14289

### Synonyms:

PTK2B; CADTK; CAKB; FADK2; FAK2; PKB; PTK; PYK2; RAFTK; Pyk2

### Immunogen:

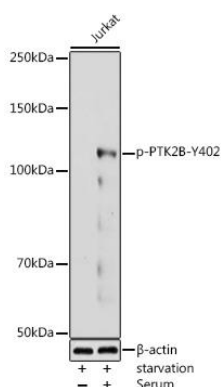
A phospho specific peptide corresponding to residues surrounding Y402 of human PTK2B

### Storage:

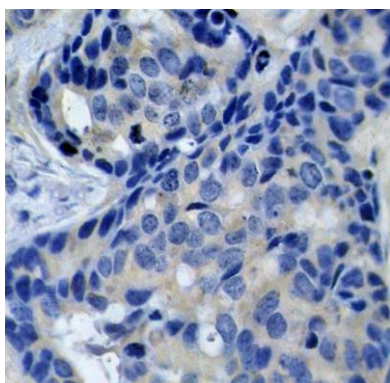
Store at -20°C. Avoid freeze / thaw cycles. Buffer: PBS with 0.02% sodium azide, 50% glycerol, pH7.3.

## Product Images

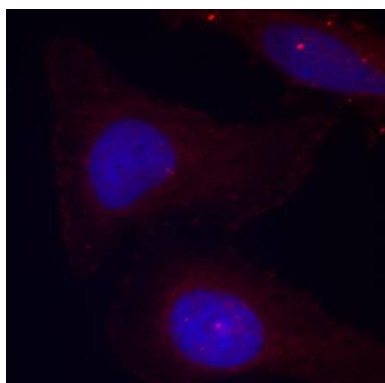
---



Western blot analysis of extracts of Jurkat cells, using Phospho-PTK2B-Y402 antibody (CABP0214) at 1:1000 dilution. Jurkat cells were treated by 10% FBS at 37°C for 30 minutes after serum-starvation overnight. Secondary antibody: HRP Goat Anti-Rabbit IgG (H+L) (CABS014) at 1:10000 dilution. Lysates/proteins: 25ug per lane. Blocking buffer: 3% nonfat dry milk in TBST. Detection: ECL Basic Kit (CABM00020). Exposure time: 180s.



Immunohistochemistry of paraffin-embedded human breast carcinoma using Phospho-PTK2B-Y402 antibody (CABP0214).



Immunofluorescence analysis of methanol-fixed HeLa cells using Phospho-PTK2B-Y402 antibody (CABP0214).