

Phospho-EIF4EBP1-T45 Rabbit Polyclonal Antibody

CABP0219



Product Information

Size:

50uL, 100uL, 200uL

Observed MW:

18kDa

Calculated MW:

12kDa

Applications:

WB IHC

Reactivity:

Human

Protein Background

This gene encodes one member of a family of translation repressor proteins. The protein directly interacts with eukaryotic translation initiation factor 4E (eIF4E), which is a limiting component of the multisubunit complex that recruits 40S ribosomal subunits to the 5' end of mRNAs. Interaction of this protein with eIF4E inhibits complex assembly and represses translation. This protein is phosphorylated in response to various signals including UV irradiation and insulin signaling, resulting in its dissociation from eIF4E and activation of mRNA translation.

Immunogen information

Gene ID:

1978

Uniprot

Q13541

Synonyms:

4E-BP1; 4EBP1; BP-1; PHAS-I; EIF4EBP1

Antibody Information

Recommended dilutions:

WB 1:500 - 1:2000 IHC 1:50
- 1:100

Source:

Rabbit

Isotype:

IgG

Purification:

Affinity purification

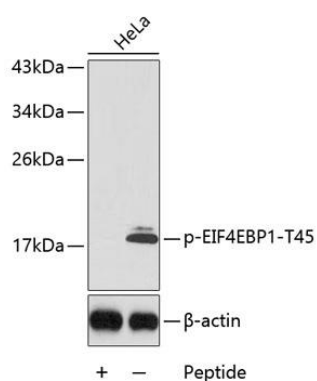
Immunogen:

A phospho specific peptide corresponding to residues surrounding T45 of human EIF4EBP1

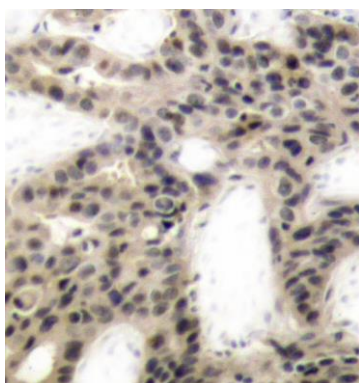
Storage:

Store at -20°C. Avoid freeze / thaw cycles. Buffer: PBS with 0.02% sodium azide, 50% glycerol, pH7.3.

Product Images



Western blot analysis of extracts from HeLa cells using Phospho-EIF4EBP1-T45 antibody (CABP0219). Secondary antibody: HRP Goat Anti-Rabbit IgG (H+L) (CABS014) at 1:10000 dilution. Lysates/proteins: 25ug per lane. Blocking buffer: 3% BSA.



Immunohistochemistry of paraffin-embedded human breast carcinoma using Phospho-EIF4EBP1-T45 antibody (CABP0219).